

ALLCO WARM ROOF DETAILS LIST

TABLE OF CONTENTS

WR-001	UPSTAND DETAIL – CLADDING OVERLAP
WR-001A	UPSTAND DETAIL – CLADDING OVERLAP - METAL SUBSTRATE
WR-002	GUTTER OULTET
WR-002A	GUTTER OULTET - METAL SUBSTRATE
WR-003	PARAPET DETAIL
WR-003A	PARAPET DETAIL - METAL SUBSTRATE
WR-004	PARAPET SCUPPER OUTLET
WR-004A	PARAPET SCUPPER OUTLET - METAL SUBSTRATE
WR-005	FLOATING DECK
WR-005A	FLOATING DECK - METAL SUBSTRATE
WR-006	PLANT FIXING PLINTH
WR-006A	PLANT FIXING PLINTH - METAL SUBSTRATE
WR-007	SKYLIGHT UPSTAND
WR-007A	KYLIGHT UPSTAND - METAL SUBSTRATE
WR-008	PIPE PENETRATION
WR-008A	PIPE PENETRATION - METAL SUBSTRATE
WR-009	DRIP EDGE
WR-009	DRIP EDGE - METAL SUBSTRATE



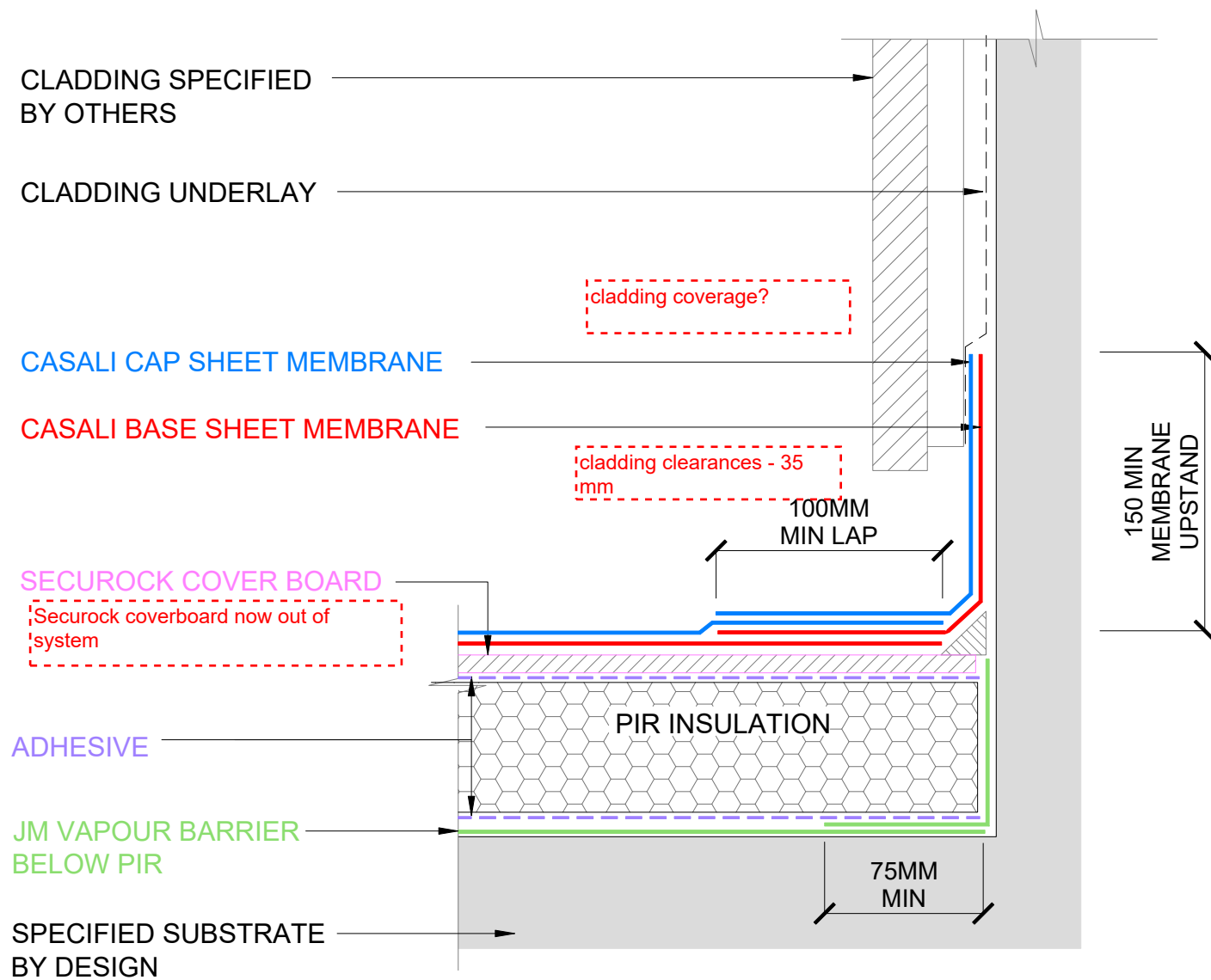
The information and data contained herein are believed to be accurate and reliable. This information does not constitute a warranty and should be used in conjunction with the project specification document supplied by Allco Waterproofing Solutions Ltd. Please contact Allco Waterproofing Solutions Ltd with any questions or deviations from this information.
© Allco Waterproofing Solution Ltd

For Technical Advice Contact:
Web: www.allco.co.nz
Email: info@allco.co.nz
Telephone: 09 448 1185
Facsimile: 09 448 1186

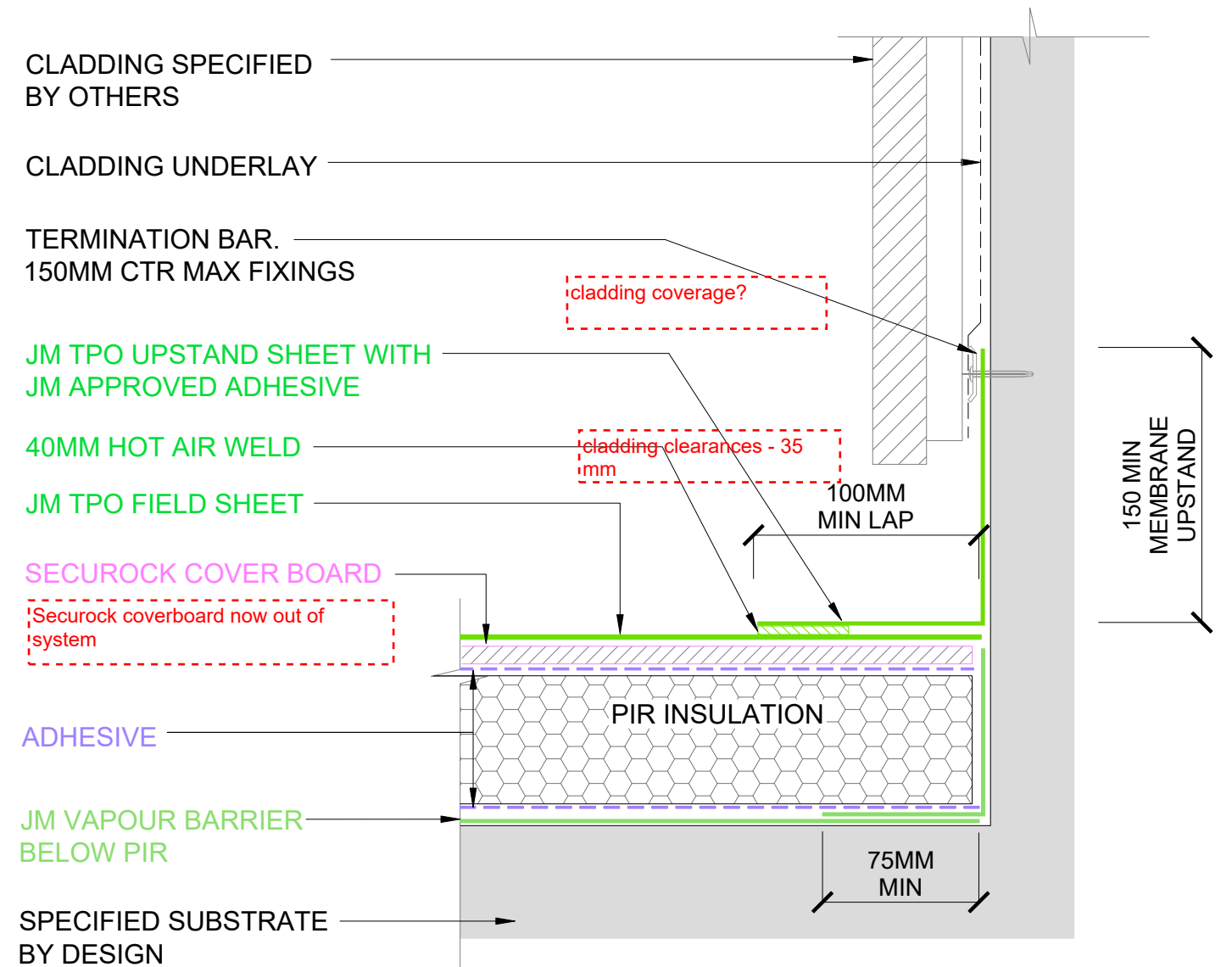


DRAWN BY: ALLCO
DATE: 06/2020

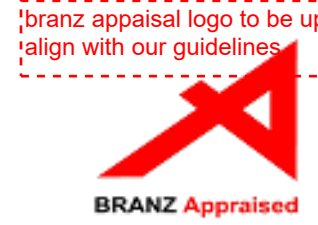
DRAWING REF: WR-INDEX
REV: 1



1 WARM ROOF - CASALI - UPSTAND / WALL CLADDING
SCALE: NTS



2 WARM ROOF - JM TPO - UPSTAND / WALL CLADDING
SCALE: NTS

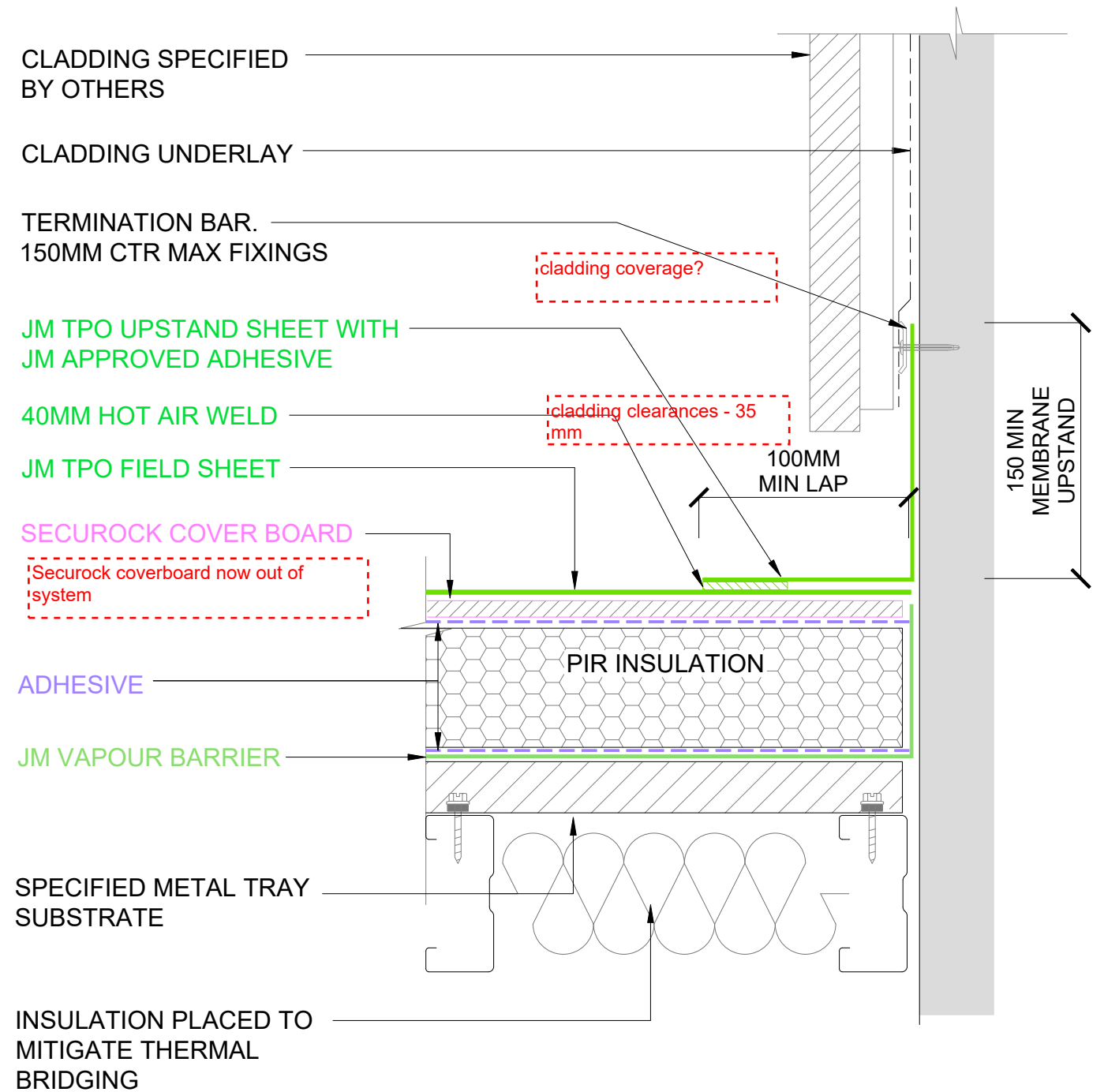
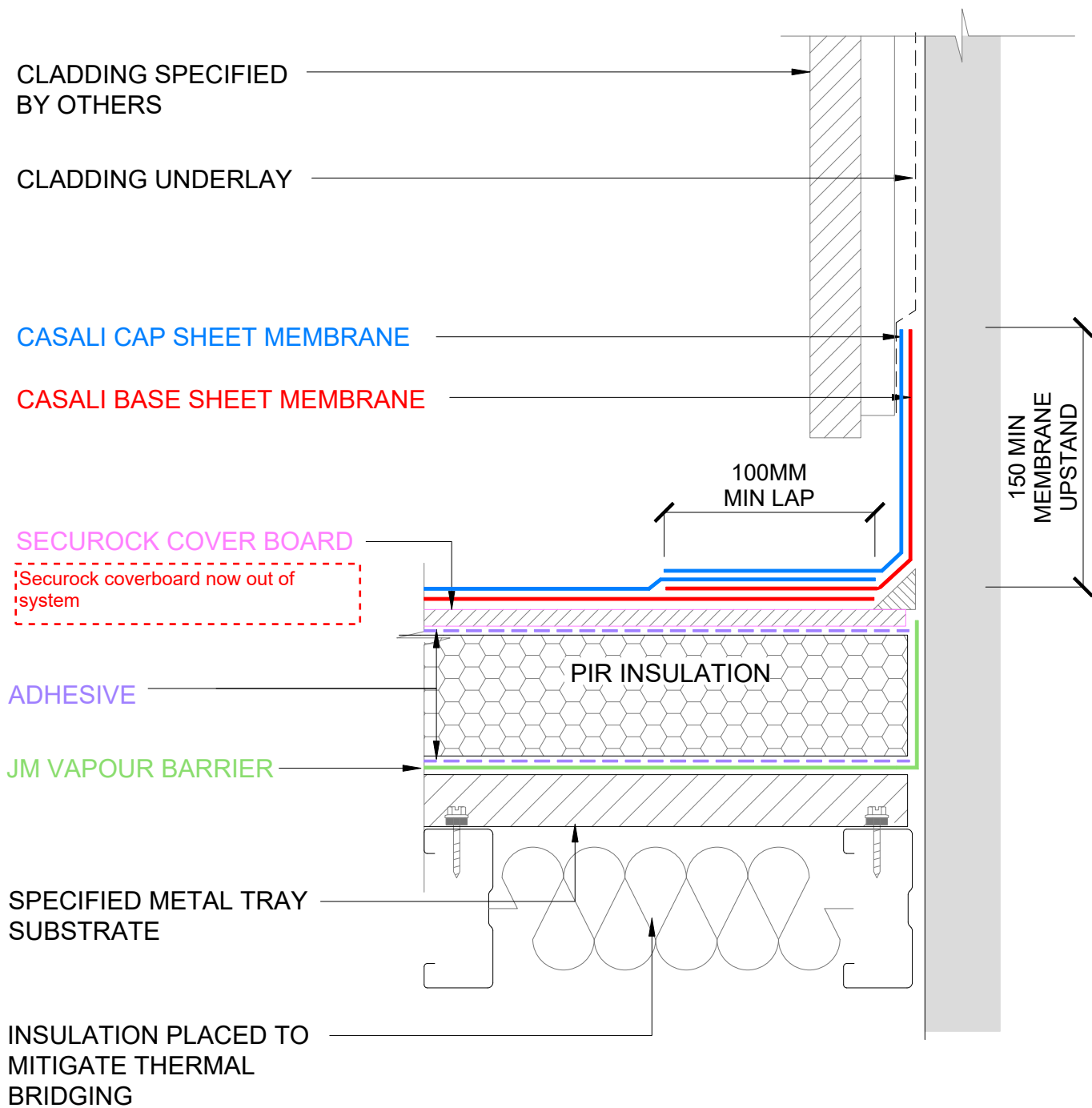


The information and data contained herein are believed to be accurate and reliable. This information does not constitute a warranty and should be used in conjunction with the project specification document supplied by Allco Waterproofing Solutions Ltd. Please contact Allco Waterproofing Solutions Ltd with any questions or deviations from this information.
© Allco Waterproofing Solution Ltd

For Technical Advice Contact:
Web: www.allco.co.nz
Email: info@allco.co.nz
Telephone: 09 448 1185
Facsimile: 09 448 1186



DRAWN BY: ALLCO	DATE: 04/2020
DRAWING REF: WR-001	REV: 1



1 WARM ROOF - CASALI - UPSTAND / WALL CLADDING
SCALE: NTS
METAL TRAY SUBSTRATE

2 WARM ROOF - JM TPO - UPSTAND / WALL CLADDING
SCALE: NTS
METAL TRAY SUBSTRATE



branz appraisal logo to be updated to align with our guidelines



The information and data contained herein are believed to be accurate and reliable. This information does not constitute a warranty and should be used in conjunction with the project specification document supplied by Allco Waterproofing Solutions Ltd. Please contact Allco Waterproofing Solutions Ltd with any questions or deviations from this information.
© Allco Waterproofing Solution Ltd

For Technical Advice Contact:
Web: www.allco.co.nz
Email: info@allco.co.nz
Telephone: 09 448 1185
Facsimile: 09 448 1186



DRAWN BY: ALLCO
DATE: 04/2020

DRAWING REF: WR-001A
REV: 1

CASALI CAP SHEET MEMBRANE

CASALI BASE SHEET MEMBRANE

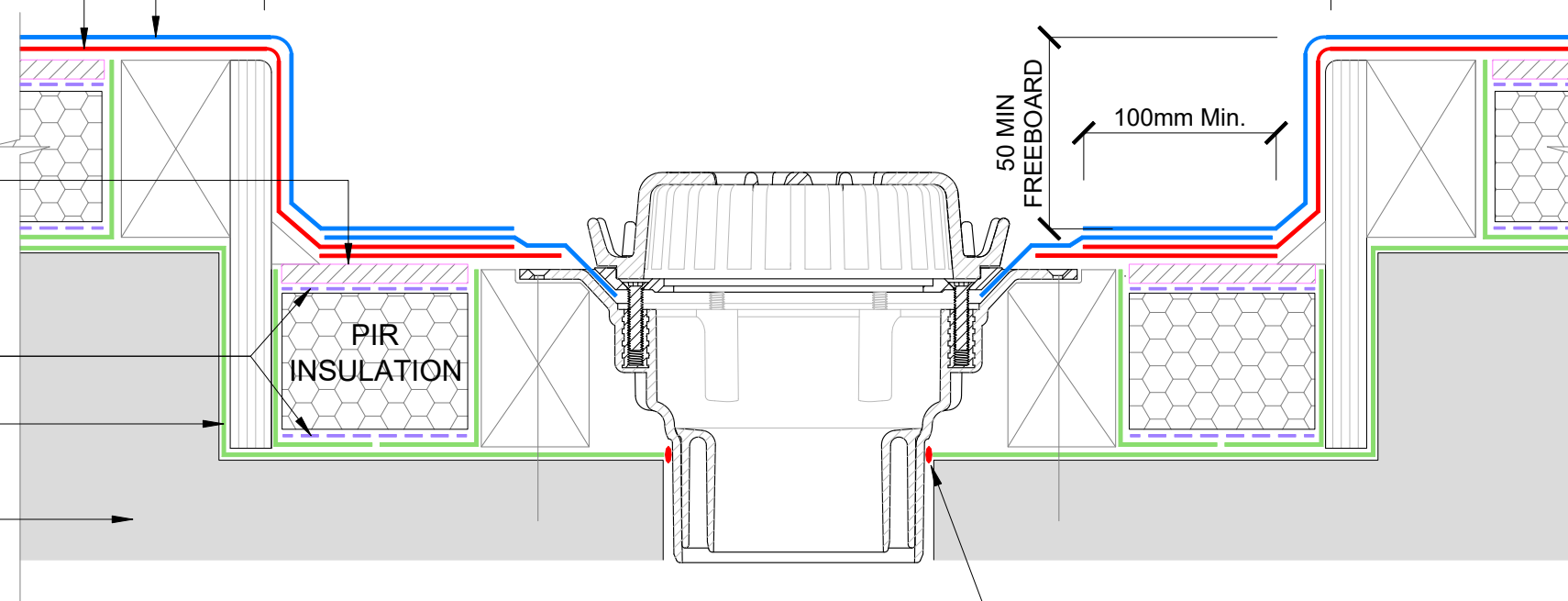
SECUROCK COVER BOARD

ADHESIVE

JM VAPOUR BARRIER BELOW PIR

SPECIFIED SUBSTRATE BY DESIGN

300 MIN



1

WARM ROOF - CASALI GUTTER OULTET

SCALE: NTS

SEALANT AROUND PENETRATION

40MM HOT AIR WELD

JM TPO FIELD SHEET

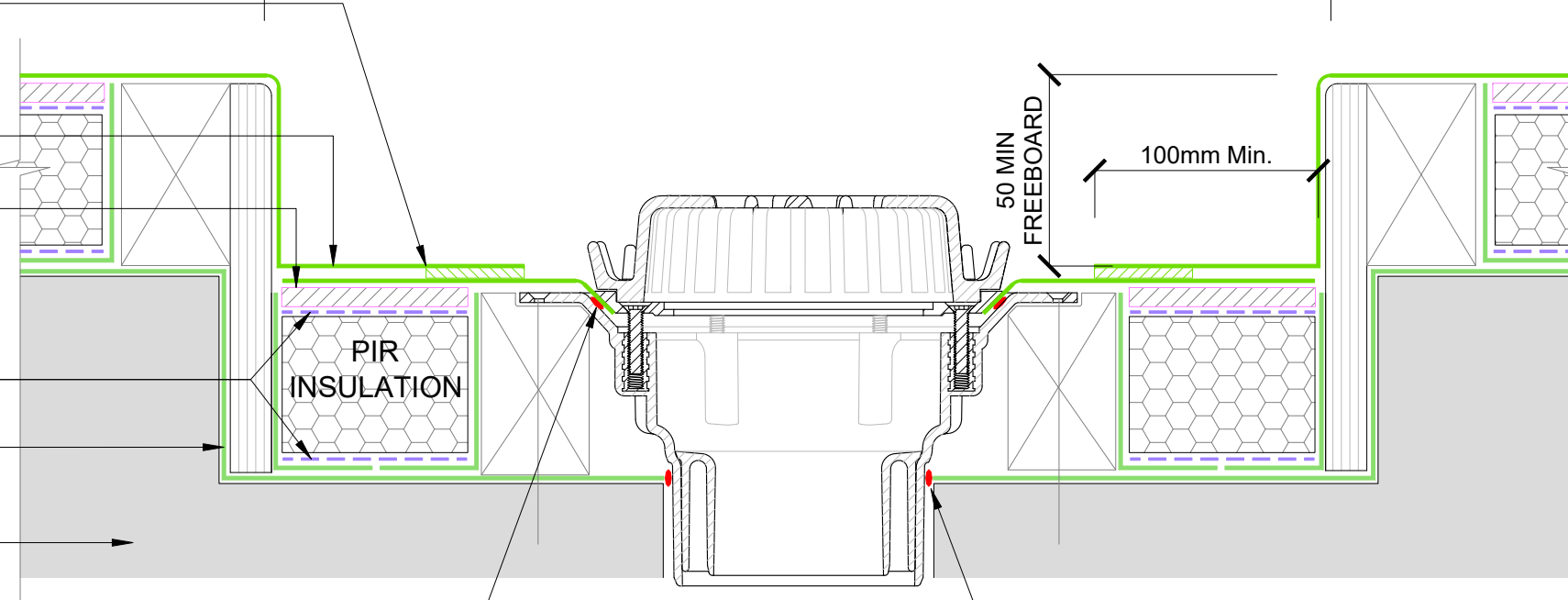
SECUROCK COVER BOARD

ADHESIVE

JM VAPOUR BARRIER BELOW PIR

SPECIFIED SUBSTRATE BY DESIGN

300 MIN



2

WARM ROOF - JM TPO GUTTER OULTET

SCALE: NTS

SEALANT AROUND PENETRATION

JM SINGLE PLY SEALING MASTIC PLACED ON FLANGE PRIOR TO TPO LAP AND CLAMP



The information and data contained herein are believed to be accurate and reliable. This information does not constitute a warranty and should be used in conjunction with the project specification document supplied by Allco Waterproofing Solutions Ltd. Please contact Allco Waterproofing Solutions Ltd with any questions or deviations from this information.
© Allco Waterproofing Solution Ltd

For Technical Advice Contact:
Web: www.allco.co.nz
Email: info@allco.co.nz
Telephone: 09 448 1185
Facsimile: 09 448 1186



DRAWN BY: ALLCO
DATE: 04/2020

DRAWING REF: WR-002
REV: 1

CASALI CAP SHEET MEMBRANE

CASALI BASE SHEET MEMBRANE

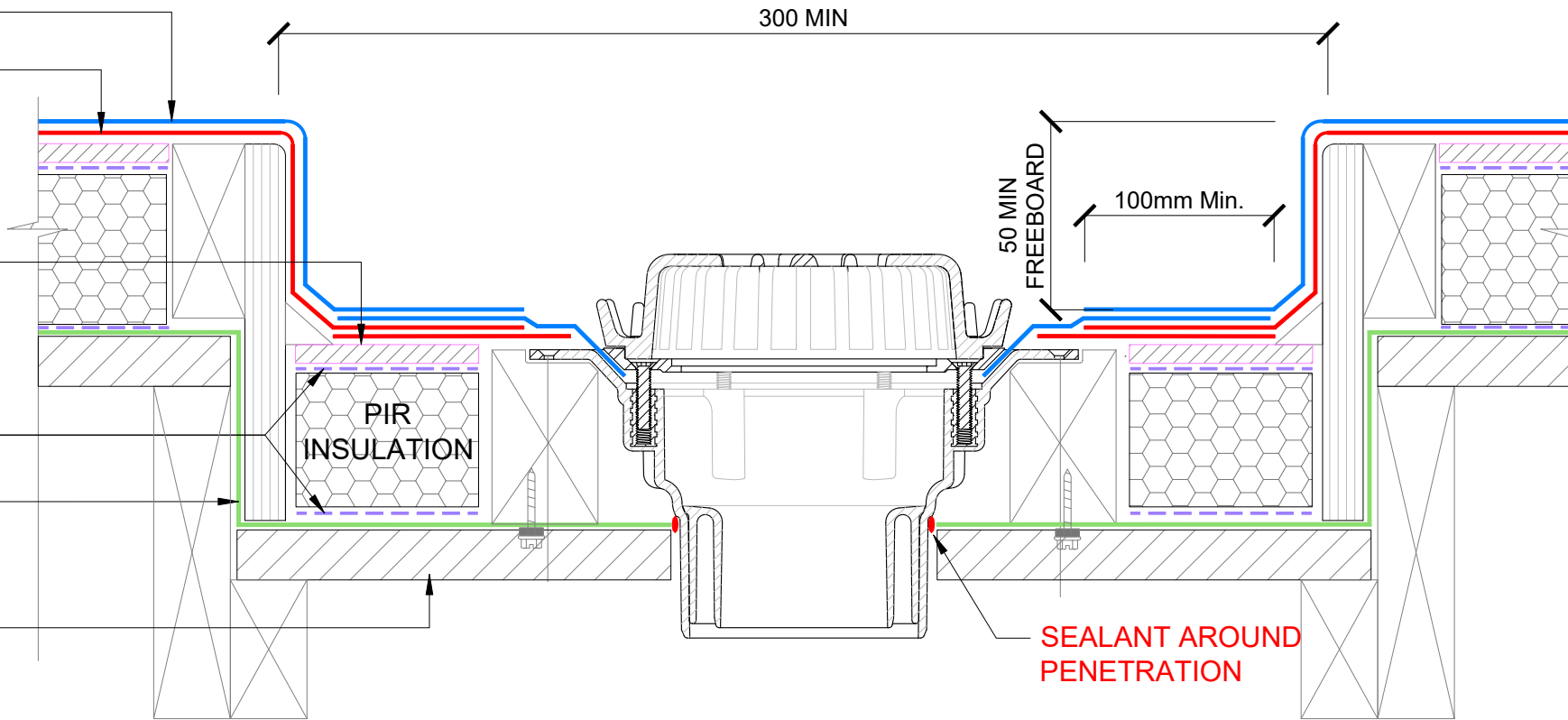
SECUROCK COVER BOARD

ADHESIVE

JM VAPOUR BARRIER BELOW PIR

SPECIFIED SUBSTRATE BY DESIGN

300 MIN



1

WARM ROOF - CASALI GUTTER OULTET

SCALE: NTS

METAL TRAY SUBSTRATE

40MM HOT AIR WELD

JM TPO FIELD SHEET

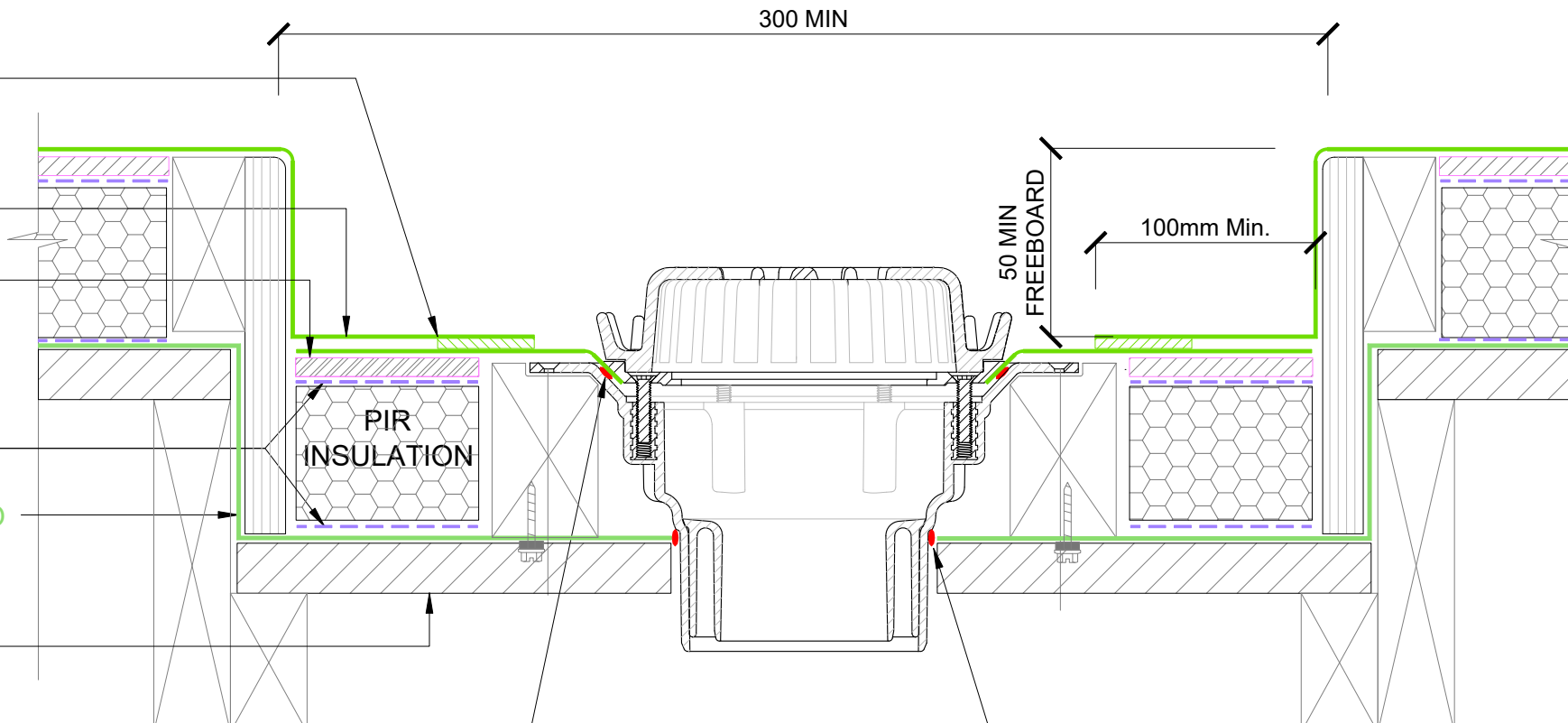
SECUROCK COVER BOARD

ADHESIVE

JM VAPOUR BARRIER TO METAL TRANSITION

SPECIFIED SUBSTRATE BY DESIGN

300 MIN



2

WARM ROOF - JM TPO GUTTER OULTET

SCALE: NTS

METAL TRAY SUBSTRATE

JM SINGLE PLY SEALING MASTIC PLACED ON FLANGE PRIOR TO TPO LAP AND CLAMP

SEALANT AROUND PENETRATION



The information and data contained herein are believed to be accurate and reliable. This information does not constitute a warranty and should be used in conjunction with the project specification document supplied by Allco Waterproofing Solutions Ltd. Please contact Allco Waterproofing Solutions Ltd with any questions or deviations from this information.
© Allco Waterproofing Solution Ltd

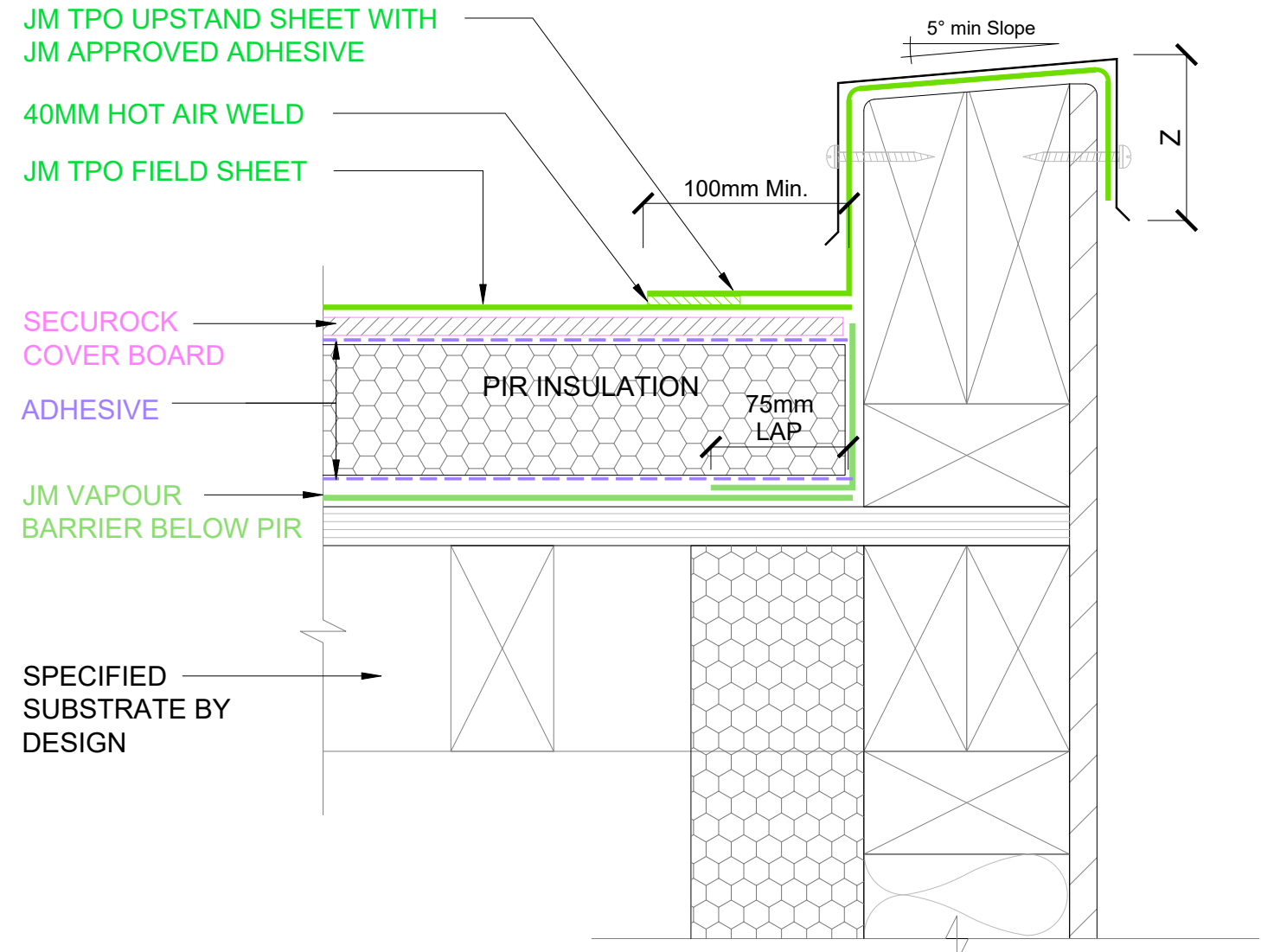
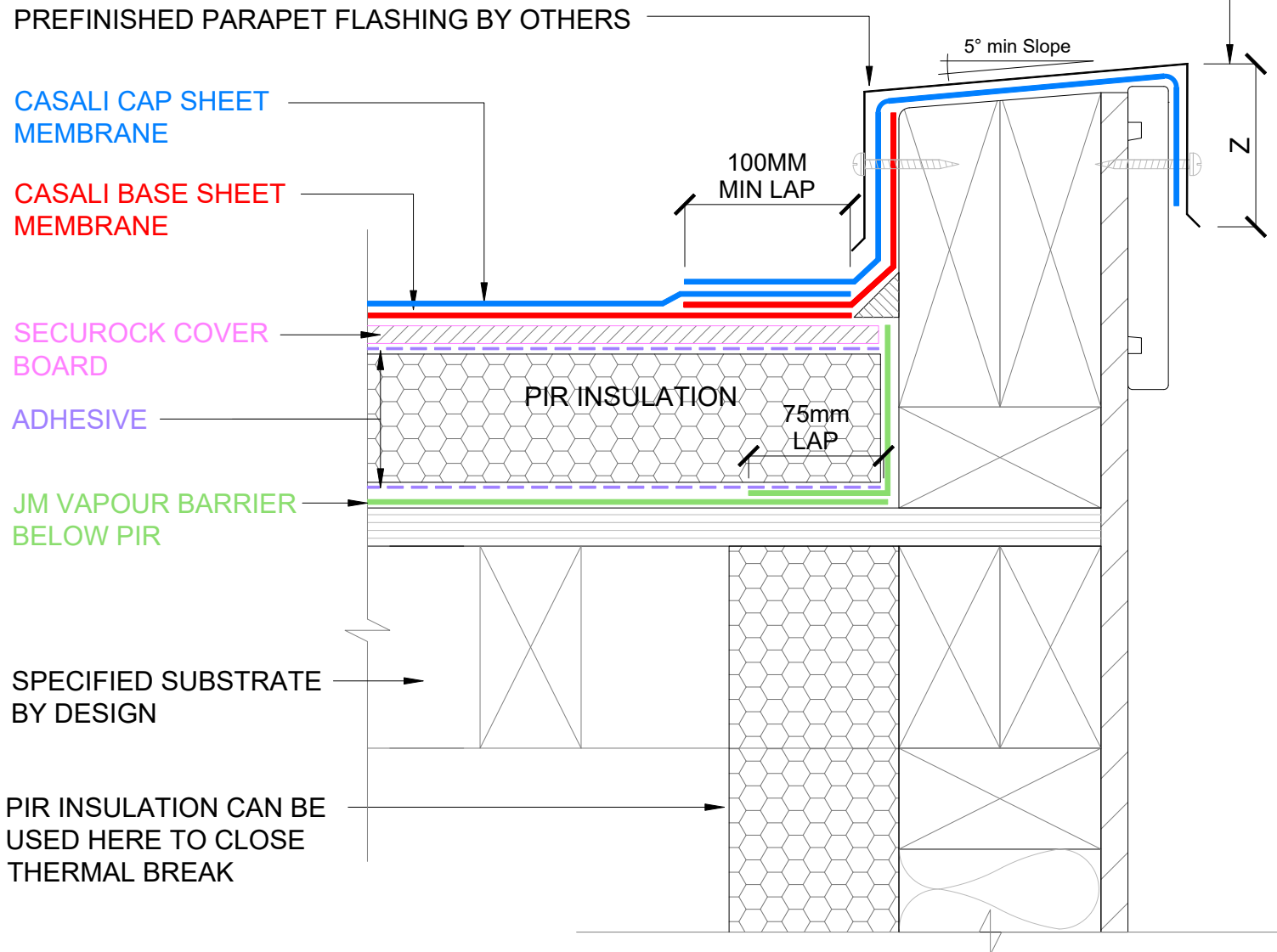
For Technical Advice Contact:
Web: www.allco.co.nz
Email: info@allco.co.nz
Telephone: 09 448 1185
Facsimile: 09 448 1186



DRAWN BY: ALLCO
DATE: 04/2020

DRAWING REF: WR-002A
REV: 1

NOTE
 Z= VARIABLE ACCORDING TO WIND
 ZONES, REFER TO NZBC E2 AS1 TABLE 7
 (70mm TYPICAL)



1 WARM ROOF - CASALI - PARAPET DETAIL
 SCALE: NTS

2 WARM ROOF - JM TPO - PARAPET DETAIL
 SCALE: NTS



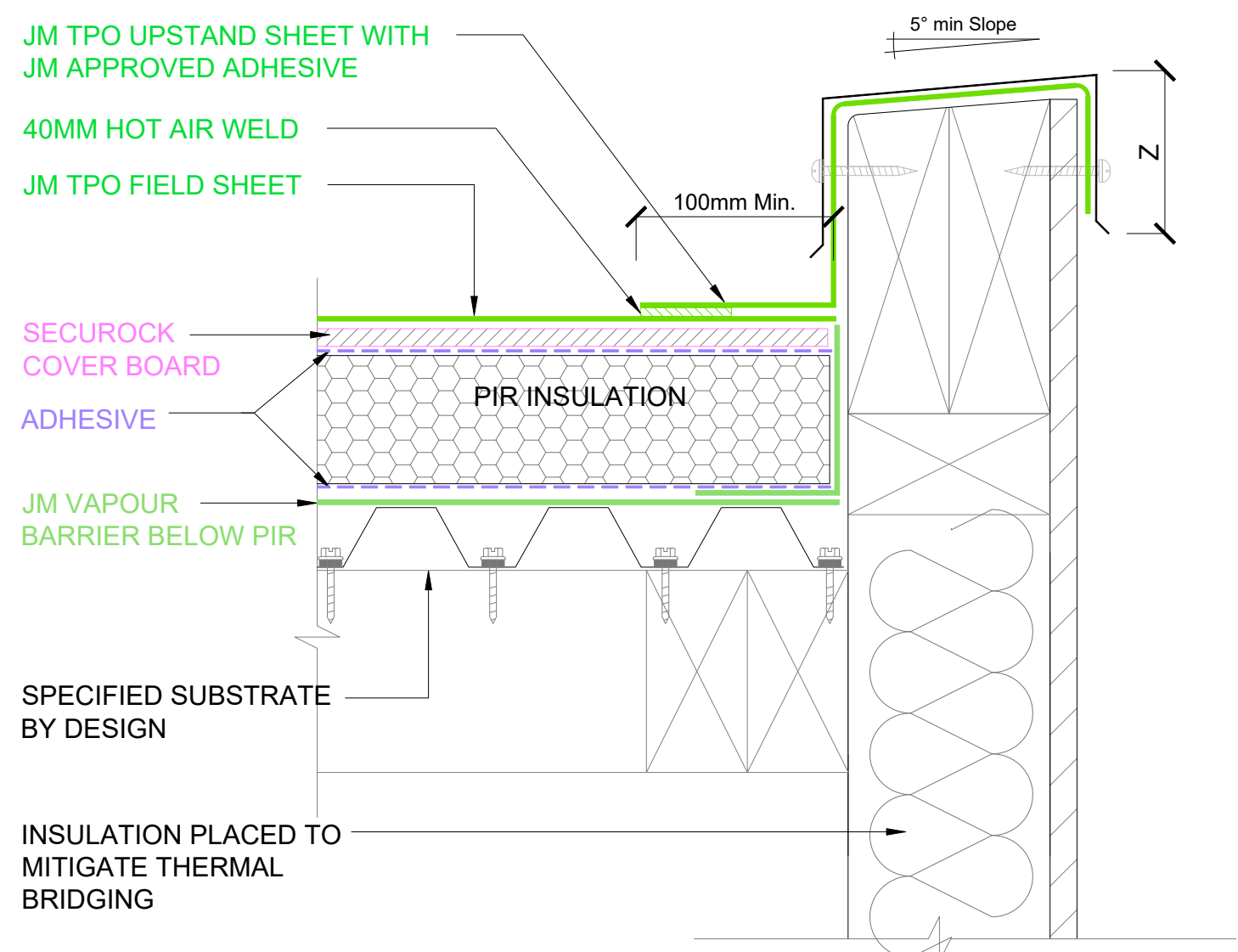
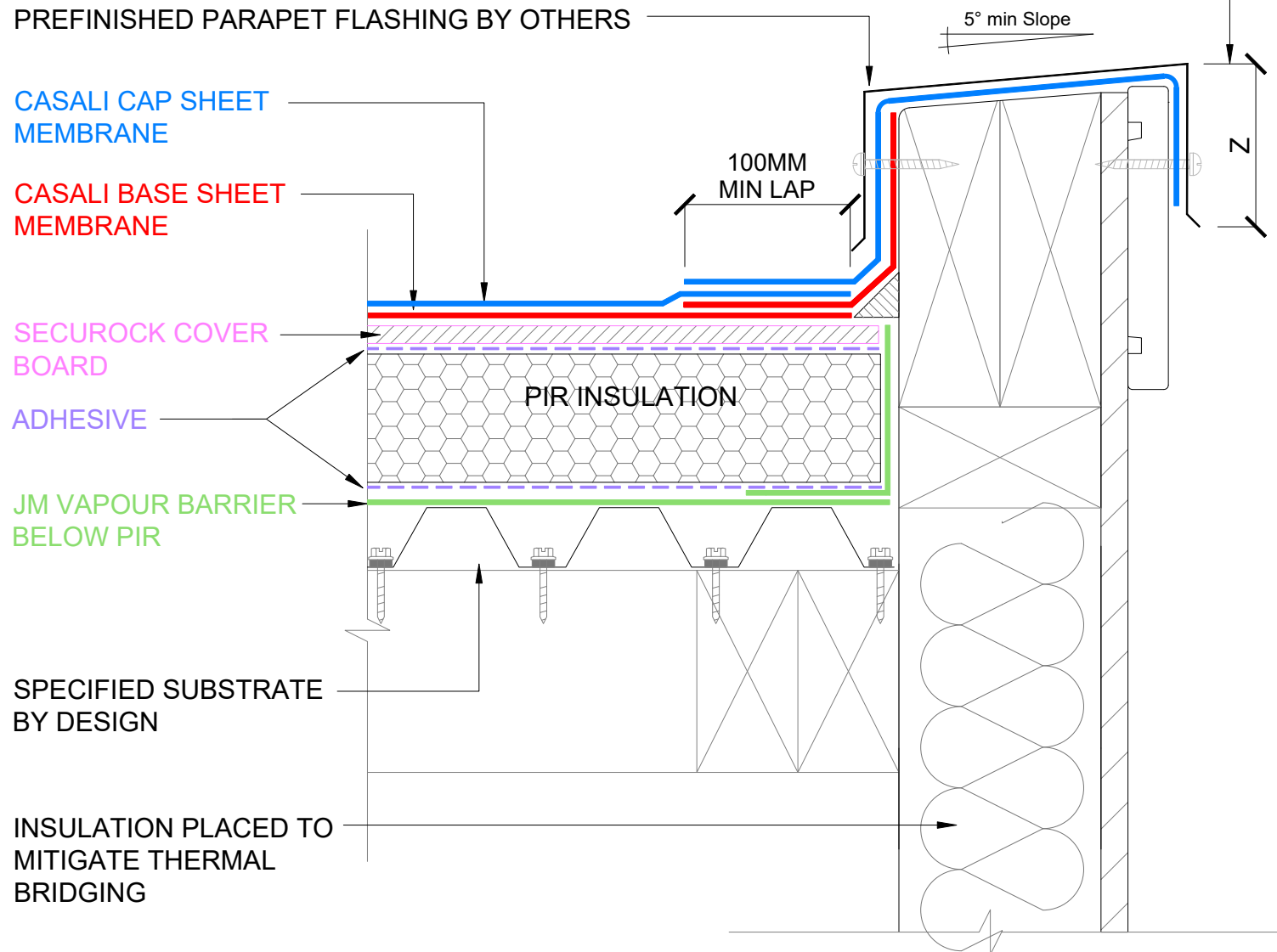
The information and data contained herein are believed to be accurate and reliable. This information does not constitute a warranty and should be used in conjunction with the project specification document supplied by Allco Waterproofing Solutions Ltd. Please contact Allco Waterproofing Solutions Ltd with any questions or deviations from this information.
 © Allco Waterproofing Solution Ltd

For Technical Advice Contact:
 Web: www.allco.co.nz
 Email: info@allco.co.nz
 Telephone: 09 448 1185
 Facsimile: 09 448 1186



DRAWN BY: ALLCO	DATE: 04/2020
DRAWING REF: WR-003	REV: 1

NOTE
 Z= VARIABLE ACCORDING TO WIND
 ZONES, REFER TO NZBC E2 AS1 TABLE 7
 (70mm TYPICAL)



1 WARM ROOF - CASALI - PARAPET DETAIL
 SCALE: NTS METAL TRAY SUBSTRATE

2 WARM ROOF - JM TPO - PARAPET DETAIL
 SCALE: NTS METAL TRAY SUBSTRATE

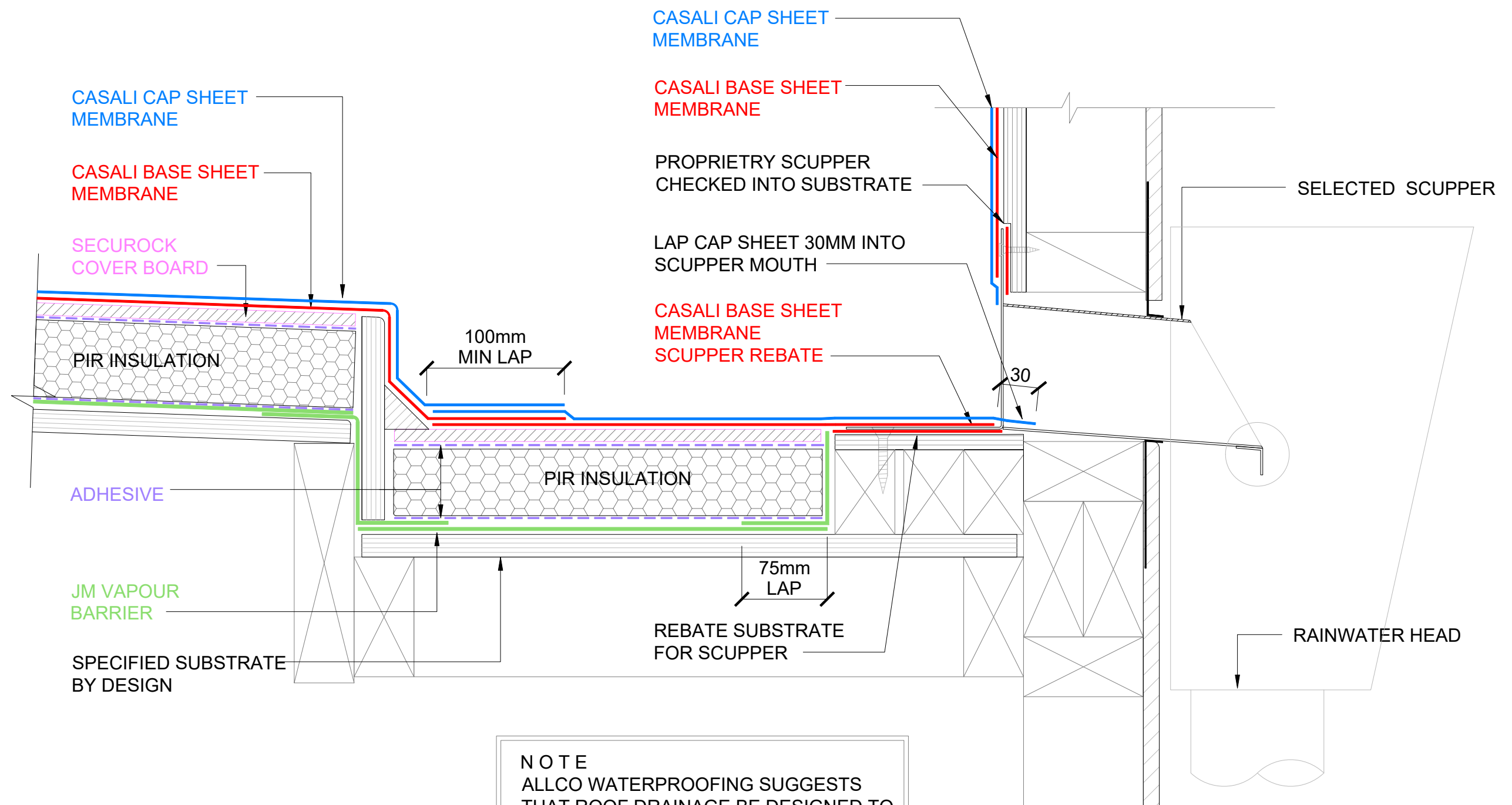


The information and data contained herein are believed to be accurate and reliable. This information does not constitute a warranty and should be used in conjunction with the project specification document supplied by Allco Waterproofing Solutions Ltd. Please contact Allco Waterproofing Solutions Ltd with any questions or deviations from this information.
 © Allco Waterproofing Solution Ltd

For Technical Advice Contact:
 Web: www.allco.co.nz
 Email: info@allco.co.nz
 Telephone: 09 448 1185
 Facsimile: 09 448 1186



DRAWN BY: ALLCO	DATE: 04/2020
DRAWING REF: WR-003A	REV: 1



NOTE
 ALLCO WATERPROOFING SUGGESTS
 THAT ROOF DRAINAGE BE DESIGNED TO
 USE CLAMPED DRAINAGE OUTLETS IN
 PREFERENCE TO SCUPPER OUTLETS

1 WARM ROOF - CASALI - PARAPET / SCUPPER
 SCALE: NTS

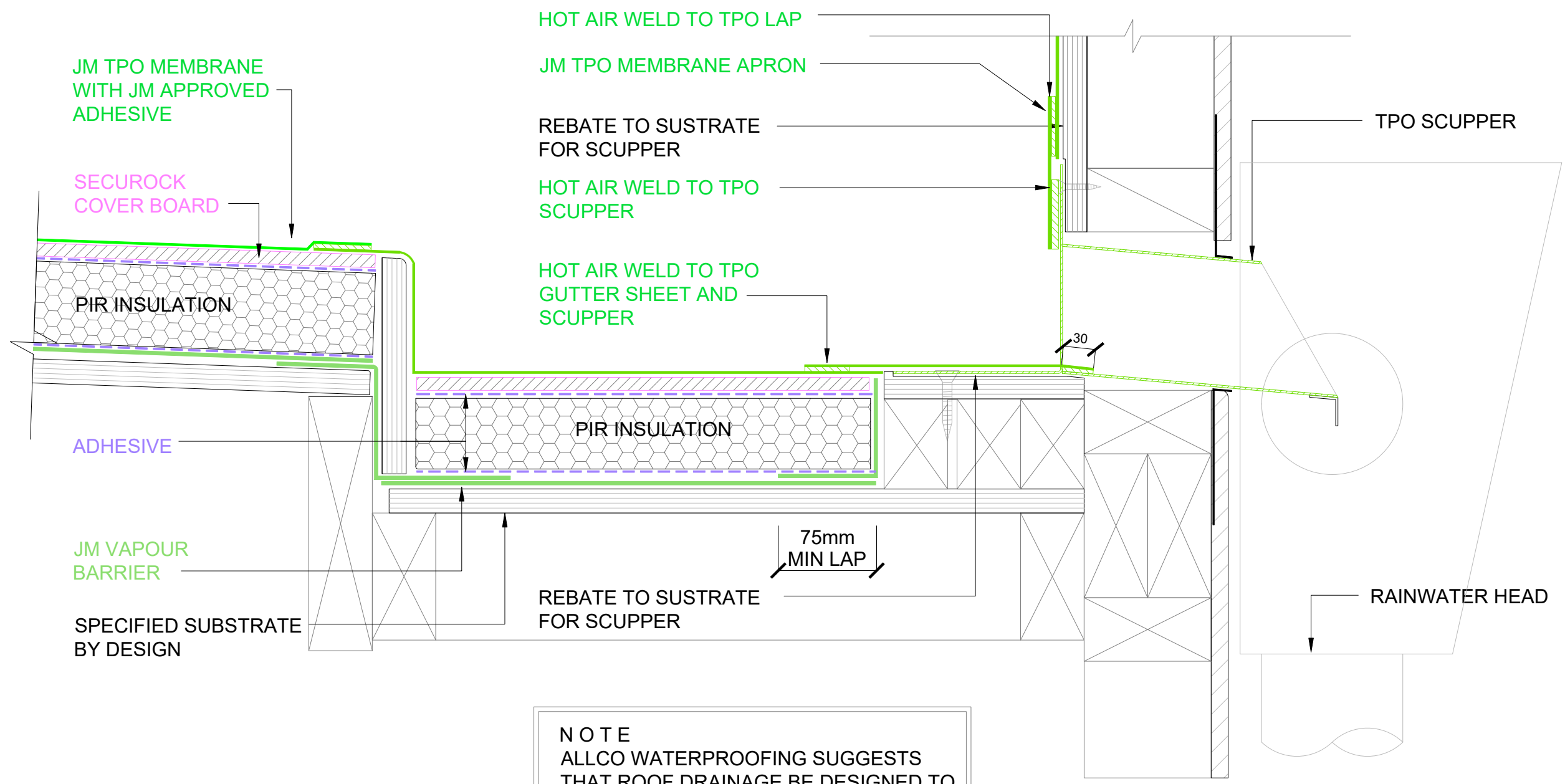


The information and data contained herein are believed to be accurate and reliable. This information does not constitute a warranty and should be used in conjunction with the project specification document supplied by Allco Waterproofing Solutions Ltd. Please contact Allco Waterproofing Solutions Ltd with any questions or deviations from this information.
 © Allco Waterproofing Solution Ltd

For Technical Advice Contact:
 Web: www.allco.co.nz
 Email: info@allco.co.nz
 Telephone: 09 448 1185
 Facsimile: 09 448 1186



DRAWN BY: ALLCO	DATE: 04/2020
DRAWING REF: WR-004	REV: 1



NOTE
 ALLCO WATERPROOFING SUGGESTS
 THAT ROOF DRAINAGE BE DESIGNED TO
 USE CLAMPED DRAINAGE OUTLETS IN
 PREFERENCE TO SCUPPER OUTLETS

1 WARM ROOF - JM TPO - PARAPET / SCUPPER
 SCALE: NTS

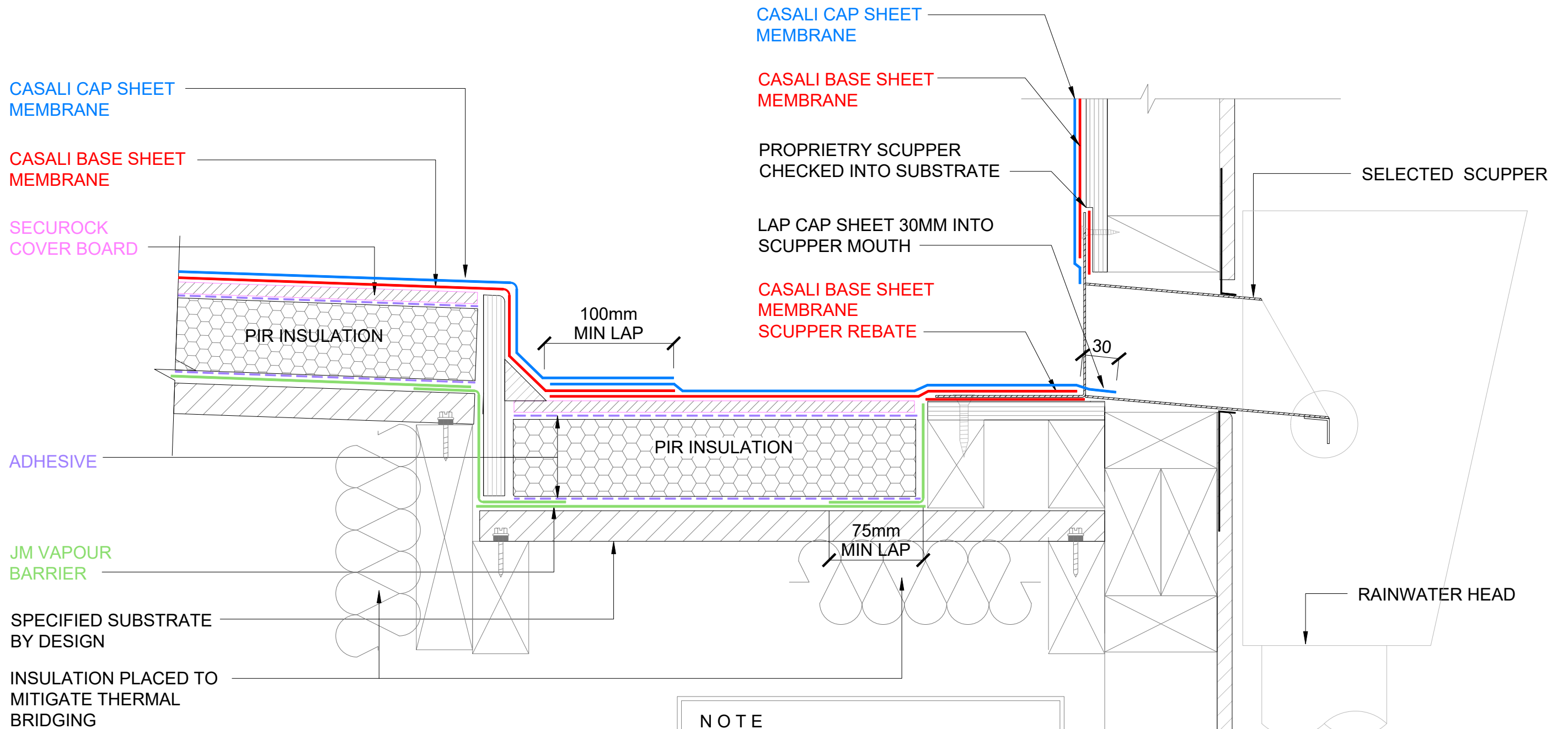


The information and data contained herein are believed to be accurate and reliable. This information does not constitute a warranty and should be used in conjunction with the project specification document supplied by Allco Waterproofing Solutions Ltd. Please contact Allco Waterproofing Solutions Ltd with any questions or deviations from this information.
 © Allco Waterproofing Solution Ltd

For Technical Advice Contact:
 Web: www.allco.co.nz
 Email: info@allco.co.nz
 Telephone: 09 448 1185
 Facsimile: 09 448 1186



DRAWN BY: ALLCO	DATE: 04/2020
DRAWING REF: WR-004A	REV: 1



1 WARM ROOF - CASALI - PARAPET / SCUPPER
SCALE: NTS

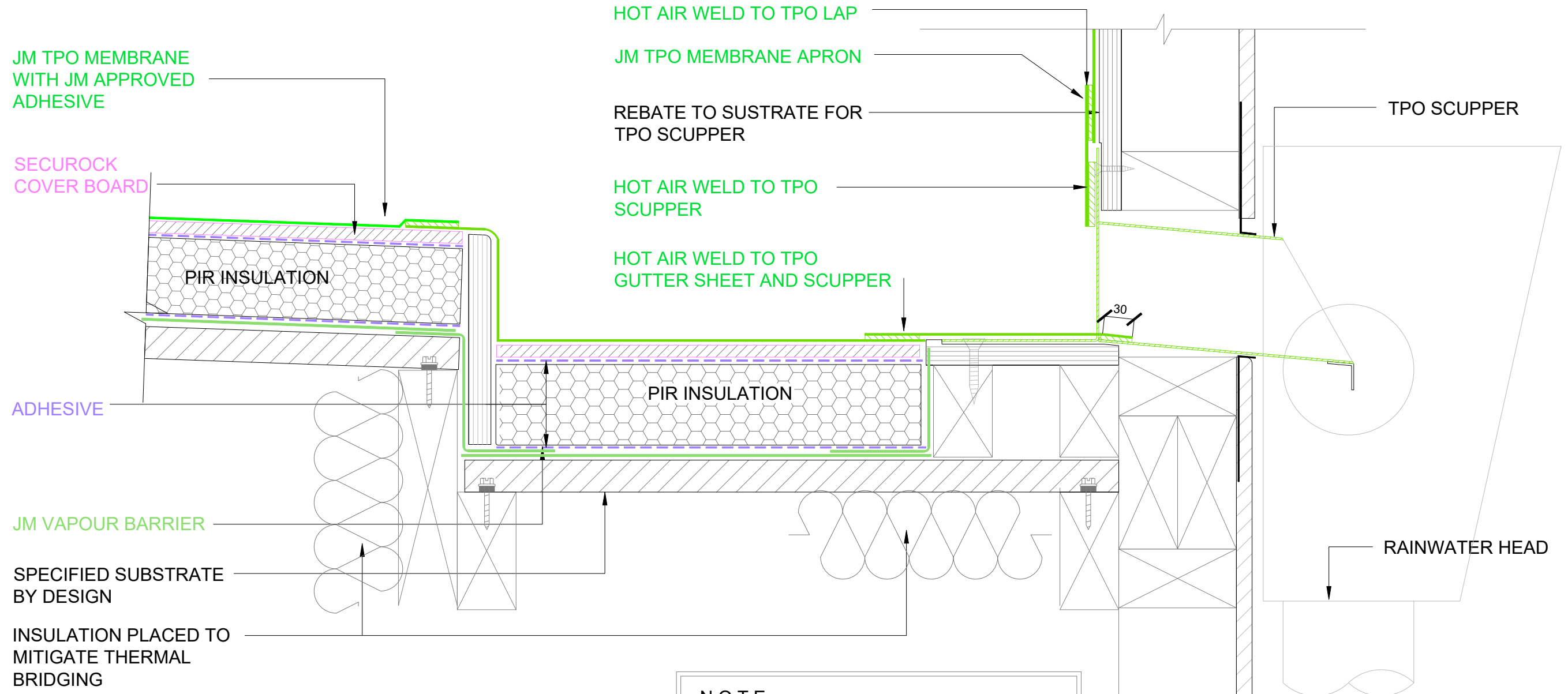


The information and data contained herein are believed to be accurate and reliable. This information does not constitute a warranty and should be used in conjunction with the project specification document supplied by Allco Waterproofing Solutions Ltd. Please contact Allco Waterproofing Solutions Ltd with any questions or deviations from this information.
© Allco Waterproofing Solution Ltd

For Technical Advice Contact:
Web: www.allco.co.nz
Email: info@allco.co.nz
Telephone: 09 448 1185
Facsimile: 09 448 1186



DRAWN BY: ALLCO	DATE: 04/2020
DRAWING REF: WR-004B	REV: 1



NOTE
 ALLCO WATERPROOFING SUGGESTS
 THAT ROOF DRAINAGE BE DESIGNED TO
 USE CLAMPED DRAINAGE OUTLETS IN
 PREFERENCE TO SCUPPER OUTLETS

1

WARM ROOF - JM TPO - PARAPET / SCUPPER

SCALE: NTS

METAL SUBSTRATE



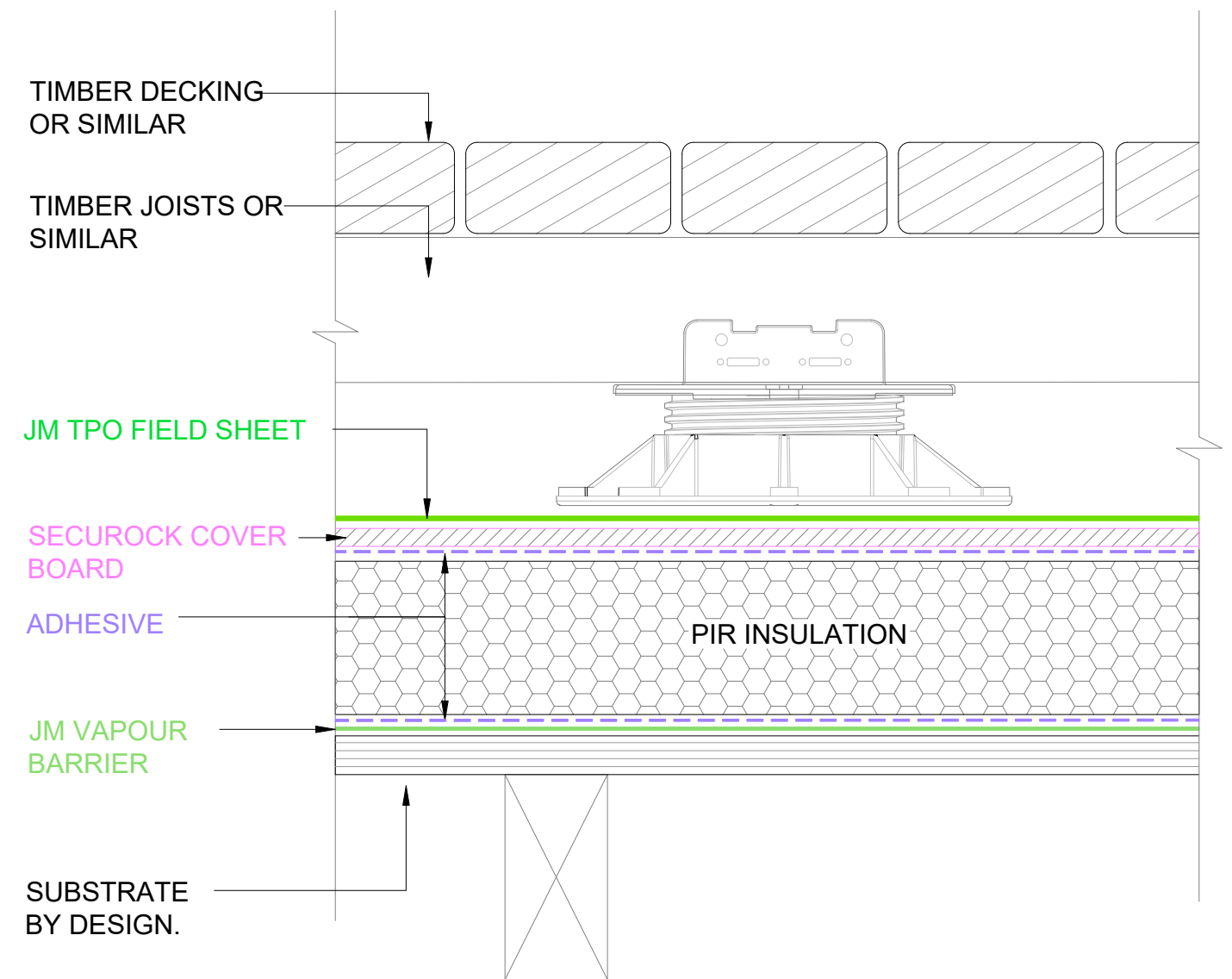
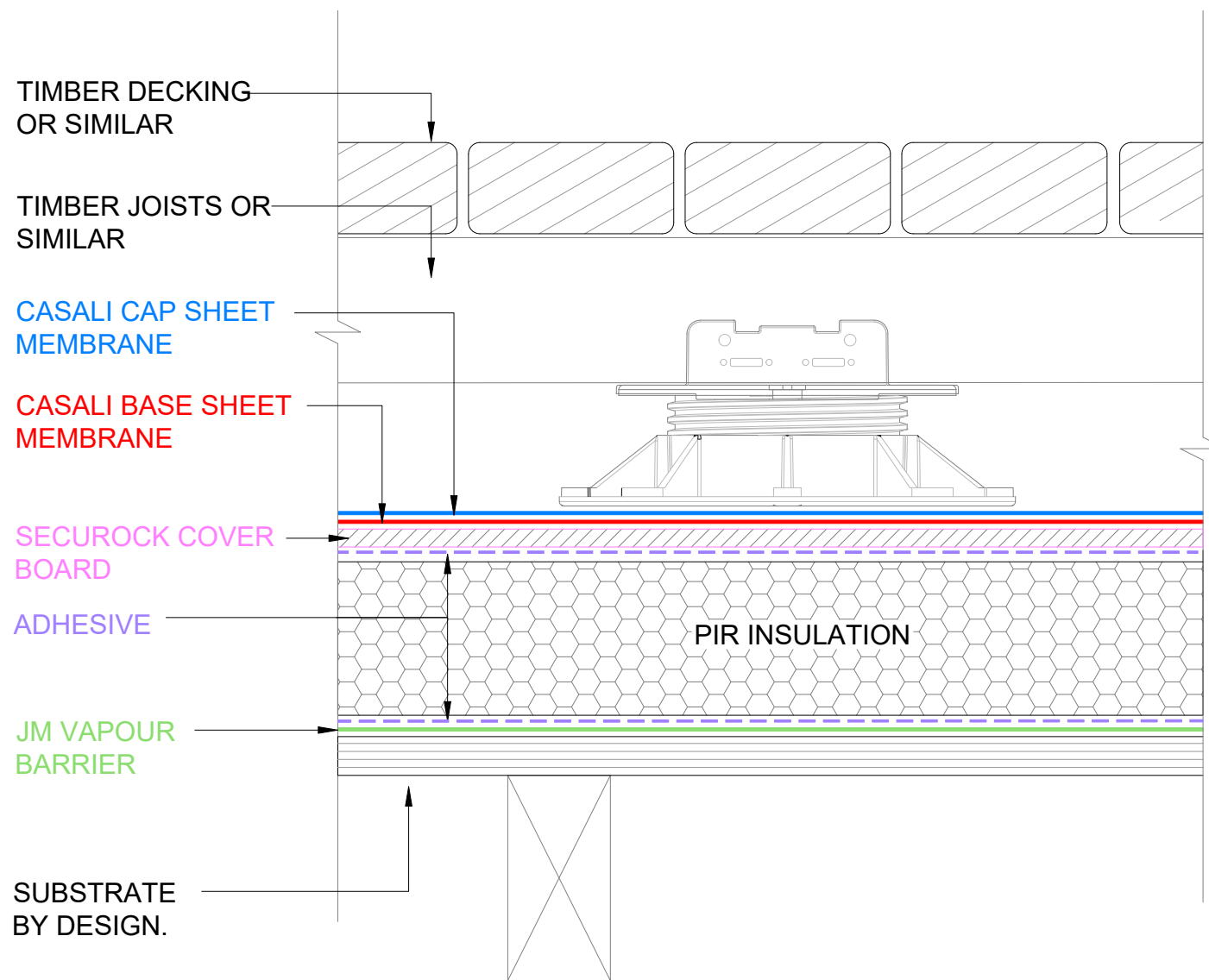
The information and data contained herein are believed to be accurate and reliable. This information does not constitute a warranty and should be used in conjunction with the project specification document supplied by Allco Waterproofing Solutions Ltd. Please contact Allco Waterproofing Solutions Ltd with any questions or deviations from this information.
 © Allco Waterproofing Solution Ltd

For Technical Advice Contact:
 Web: www.allco.co.nz
 Email: info@allco.co.nz
 Telephone: 09 448 1185
 Facsimile: 09 448 1186



DRAWN BY: ALLCO
 DATE: 04/2020

DRAWING REF: WR-004C
 REV: 1



1

WARM ROOF - CASALI - FLOATING DECK

SCALE: NTS

2

WARM ROOF - JM TPO - FLOATING DECK

SCALE: NTS

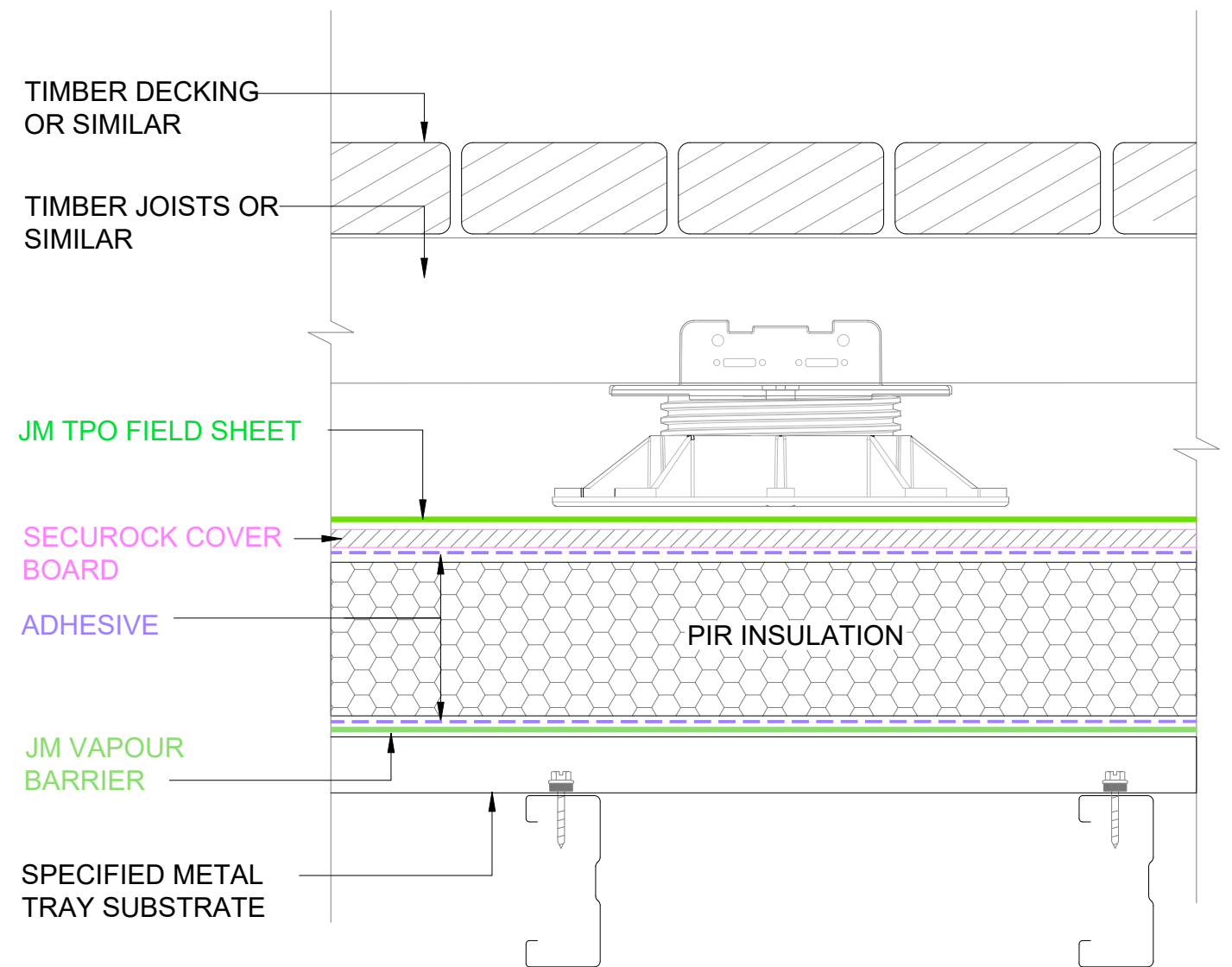
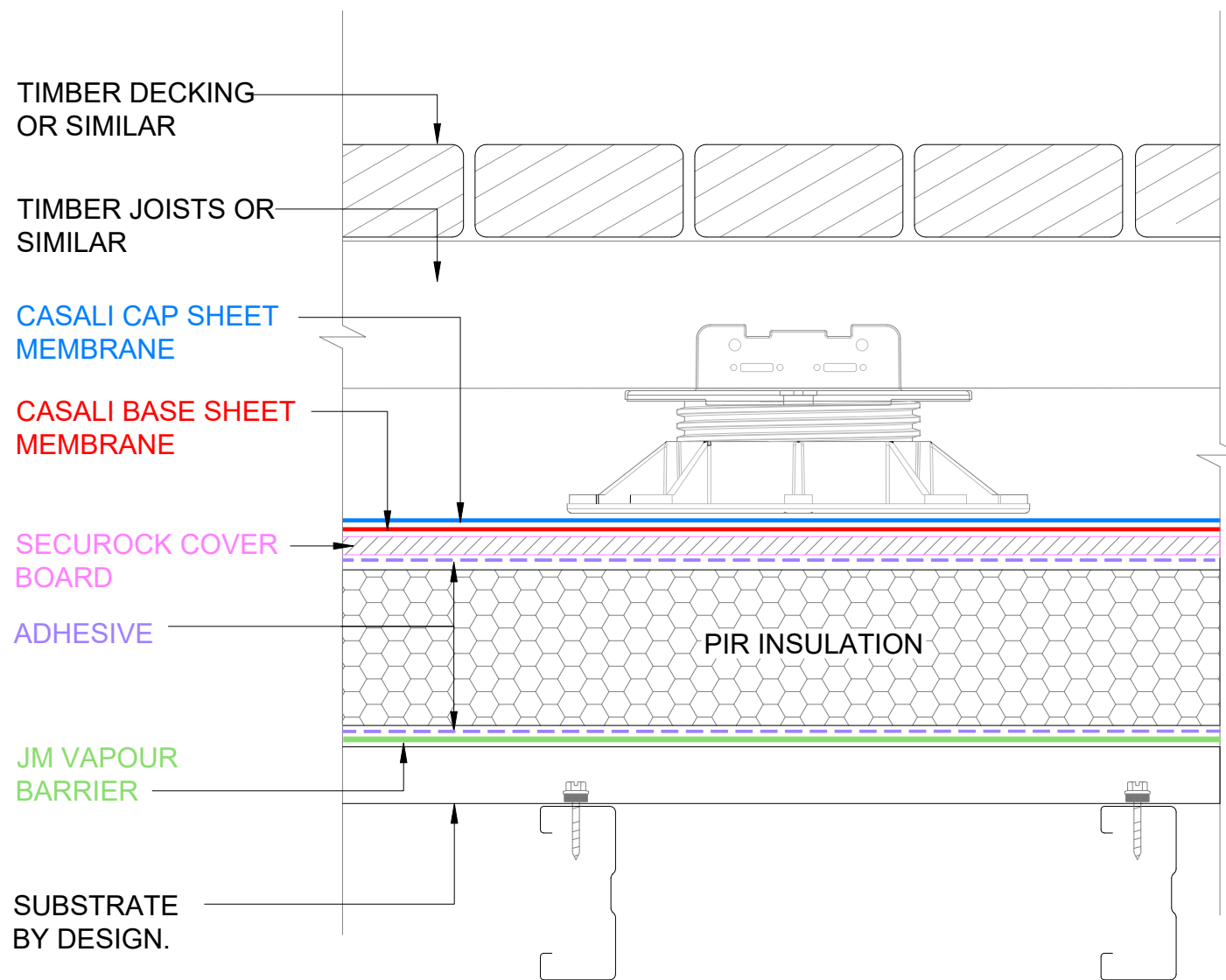


The information and data contained herein are believed to be accurate and reliable. This information does not constitute a warranty and should be used in conjunction with the project specification document supplied by Allco Waterproofing Solutions Ltd. Please contact Allco Waterproofing Solutions Ltd with any questions or deviations from this information.
© Allco Waterproofing Solution Ltd

For Technical Advice Contact:
Web: www.allco.co.nz
Email: info@allco.co.nz
Telephone: 09 448 1185
Facsimile: 09 448 1186



DRAWN BY: ALLCO	DATE: 04/2020
DRAWING REF: WR-005	REV: 1



1

WARM ROOF - CASALI - FLOATING DECK

SCALE: NTS

METAL TRAY SUBSTRATE

2

WARM ROOF - JM TPO - FLOATING DECK

SCALE: NTS

METAL TRAY SUBSTRATE



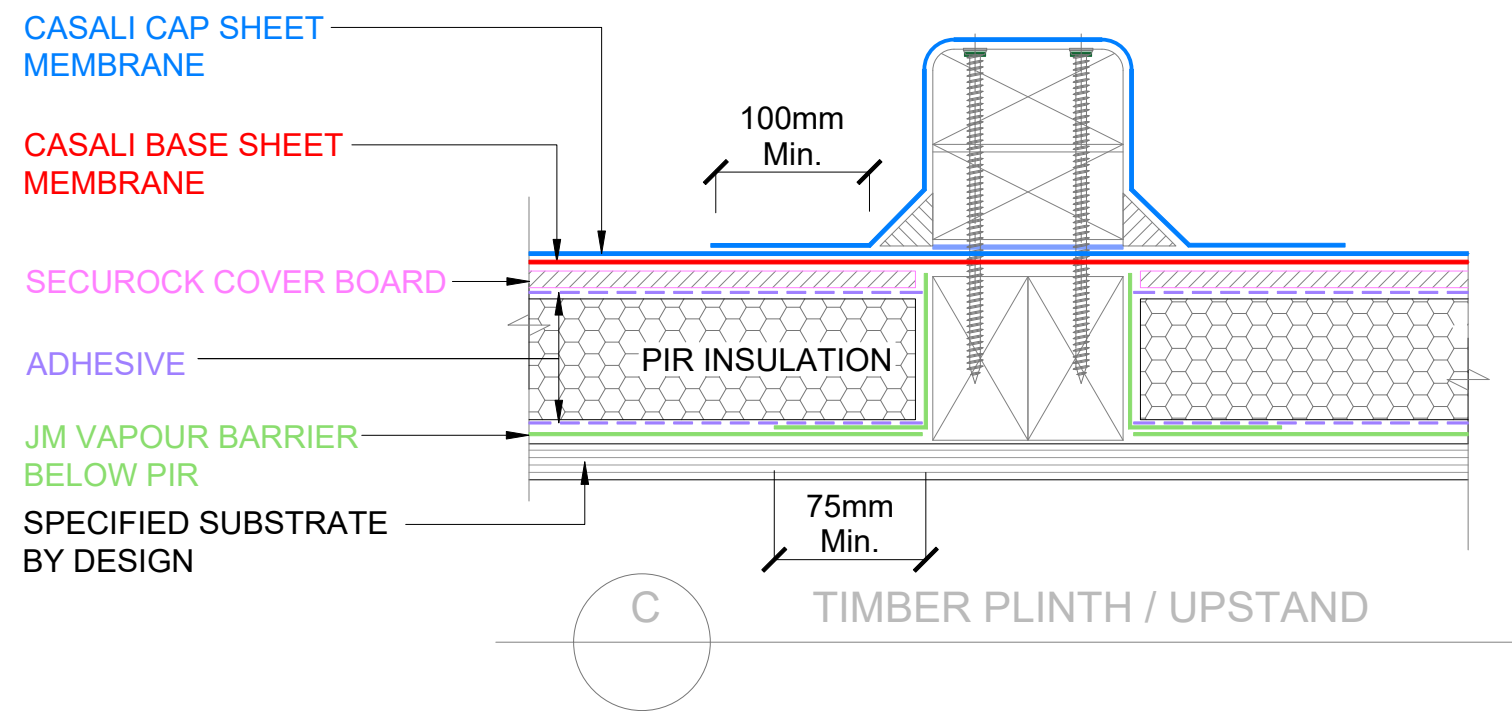
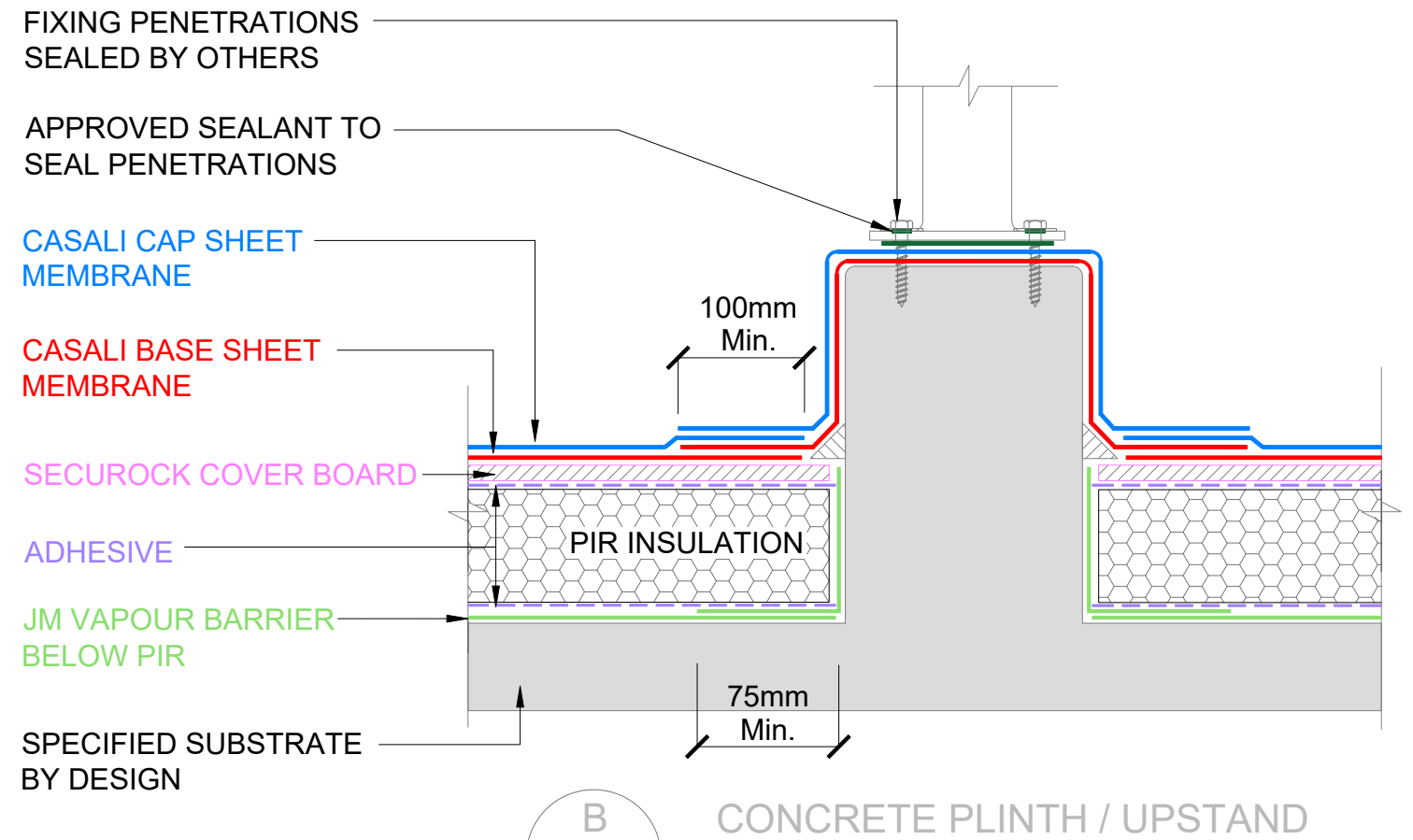
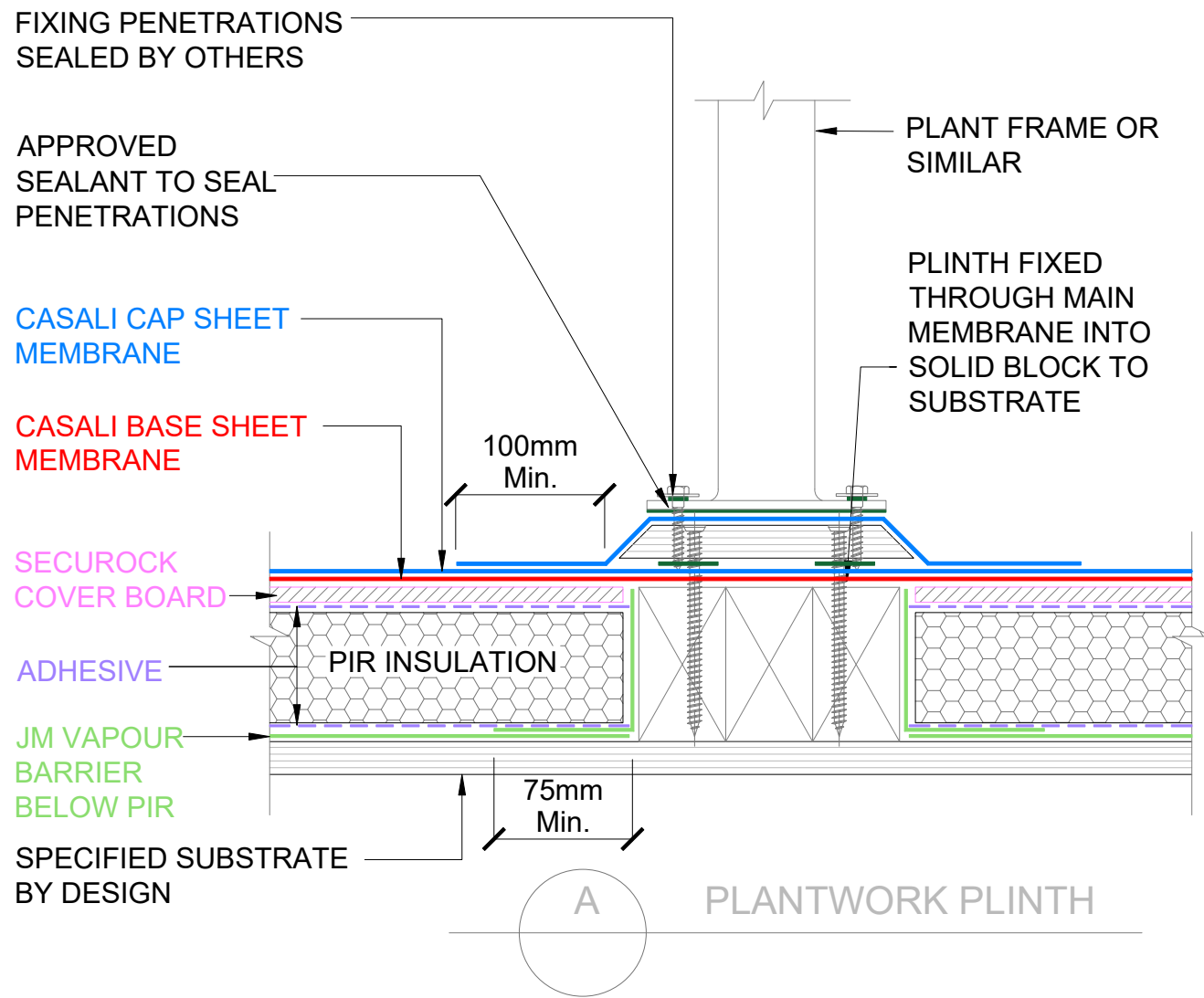
The information and data contained herein are believed to be accurate and reliable. This information does not constitute a warranty and should be used in conjunction with the project specification document supplied by Allco Waterproofing Solutions Ltd. Please contact Allco Waterproofing Solutions Ltd with any questions or deviations from this information.
© Allco Waterproofing Solution Ltd

For Technical Advice Contact:
Web: www.allco.co.nz
Email: info@allco.co.nz
Telephone: 09 448 1185
Facsimile: 09 448 1186



DRAWN BY: ALLCO
DATE: 04/2020

DRAWING REF: WR-005A
REV: 1



1

WARM ROOF - CASALI - PLANTWORK FIXING PLINTH

SCALE: NTS



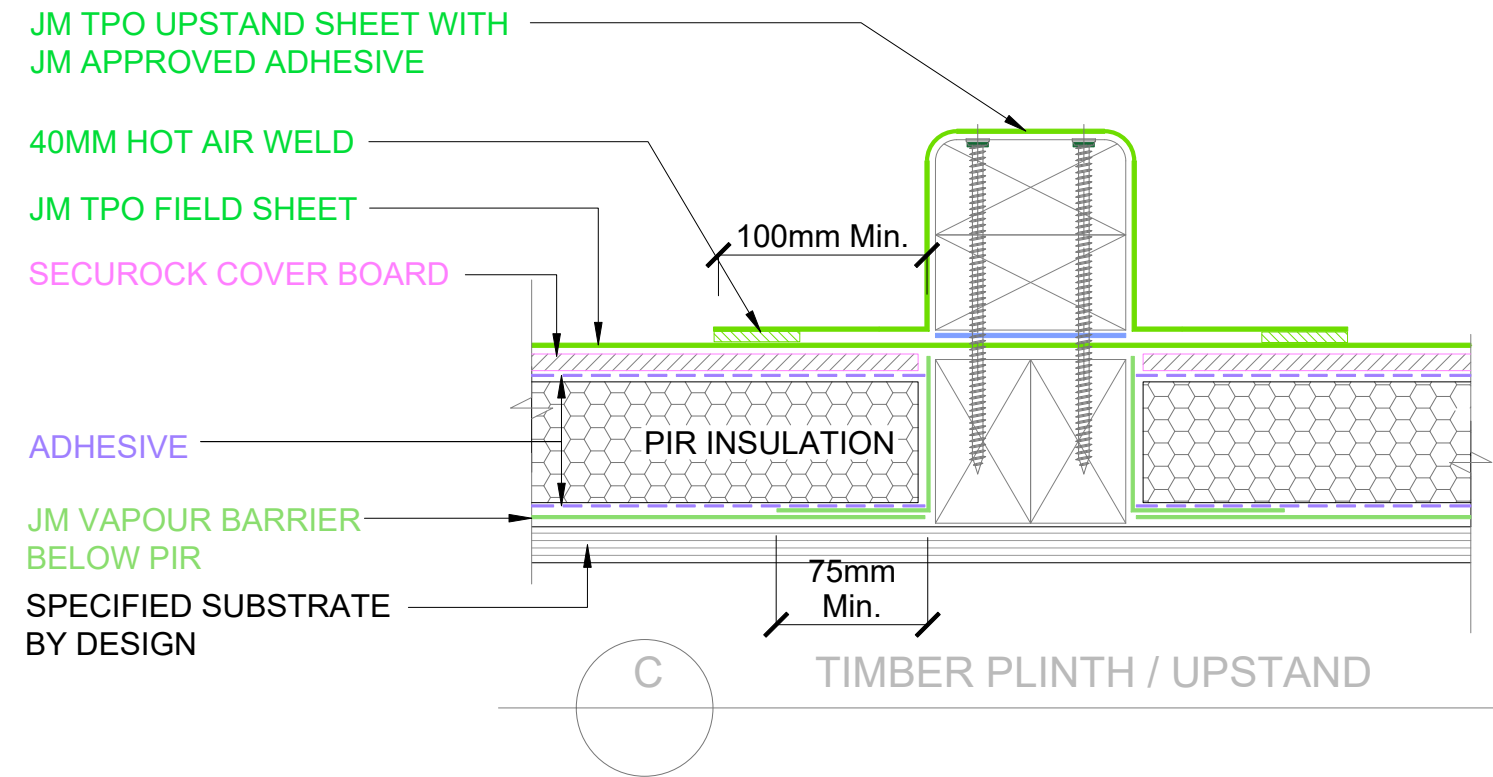
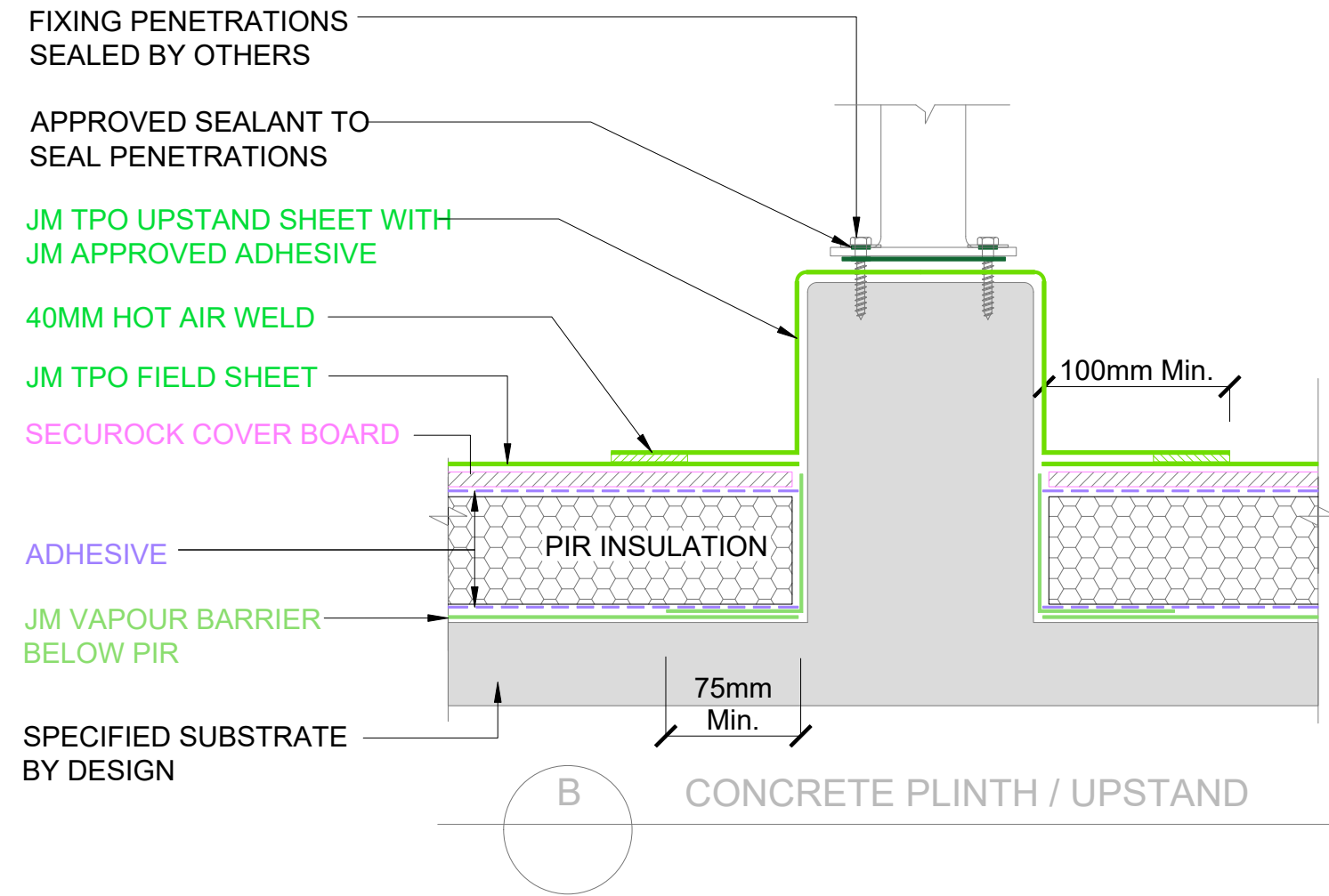
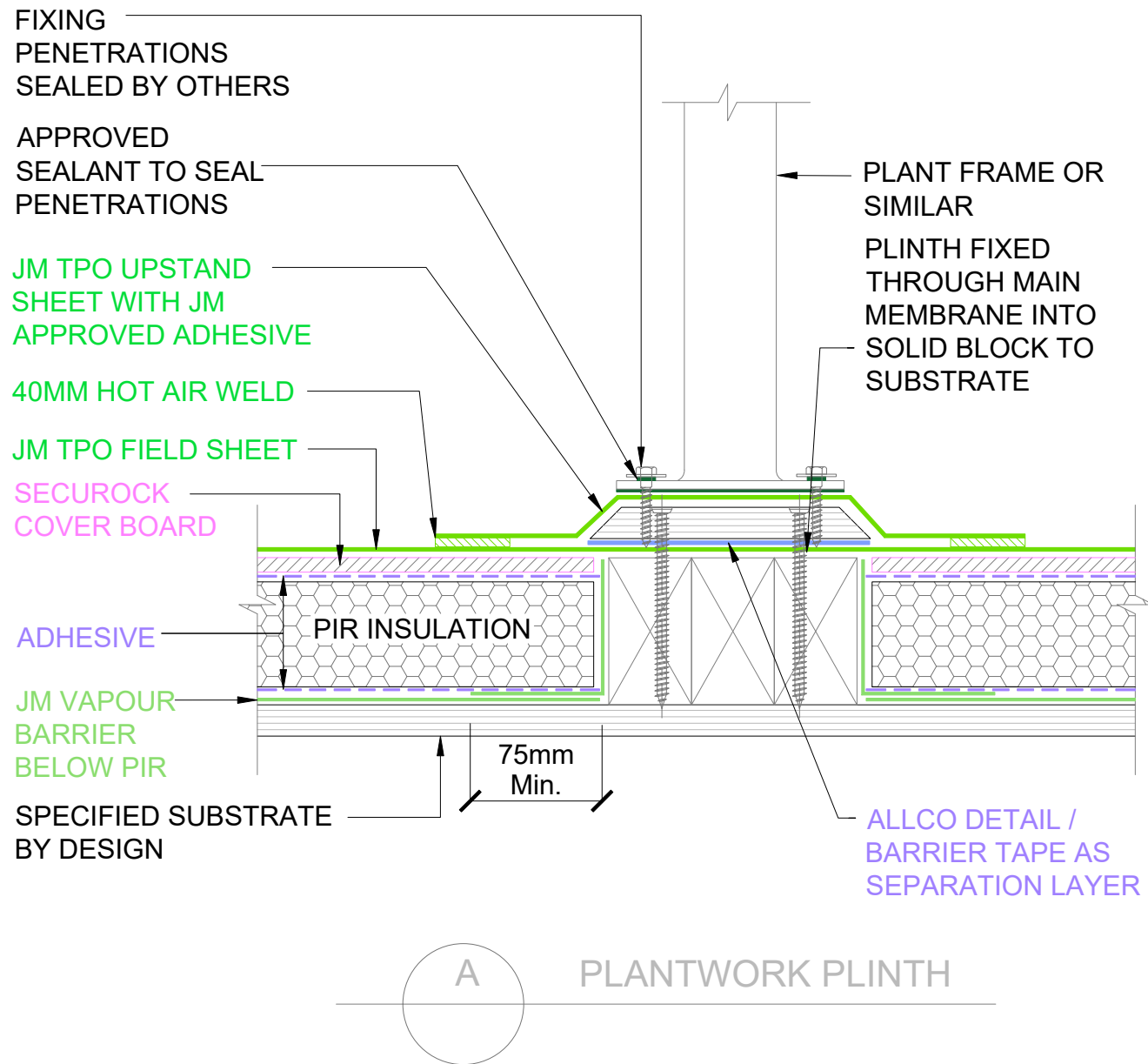
The information and data contained herein are believed to be accurate and reliable. This information does not constitute a warranty and should be used in conjunction with the project specification document supplied by Allco Waterproofing Solutions Ltd. Please contact Allco Waterproofing Solutions Ltd with any questions or deviations from this information.
© Allco Waterproofing Solution Ltd

For Technical Advice Contact:
Web: www.allco.co.nz
Email: info@allco.co.nz
Telephone: 09 448 1185
Facsimile: 09 448 1186



DRAWN BY: ALLCO
DATE: 04/2020

DRAWING REF: WR-006
REV: 1



1 WARM ROOF - JM TPO - PLANTWORK FIXING PLINTH
SCALE: NTS

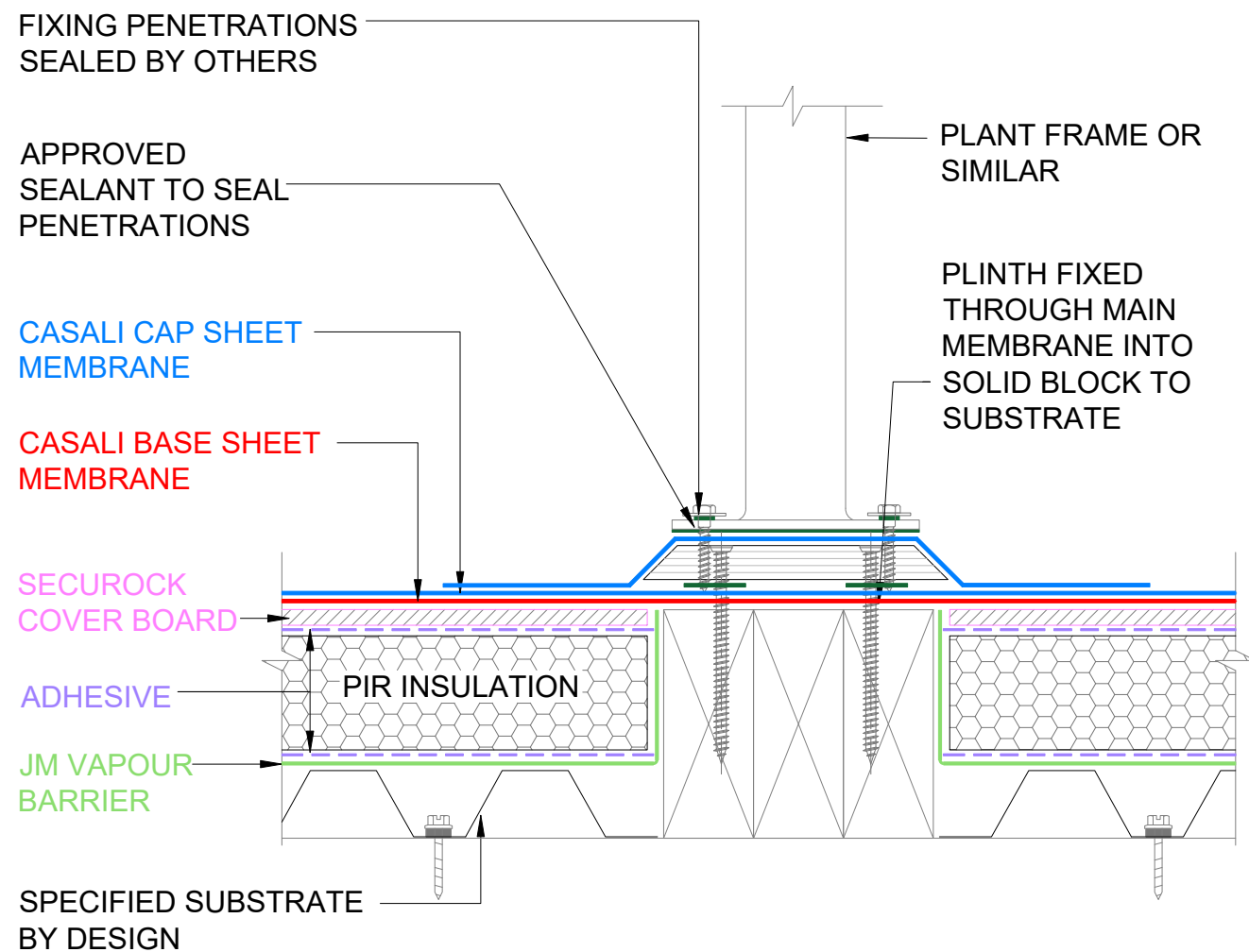


The information and data contained herein are believed to be accurate and reliable. This information does not constitute a warranty and should be used in conjunction with the project specification document supplied by Allco Waterproofing Solutions Ltd. Please contact Allco Waterproofing Solutions Ltd with any questions or deviations from this information.
© Allco Waterproofing Solution Ltd

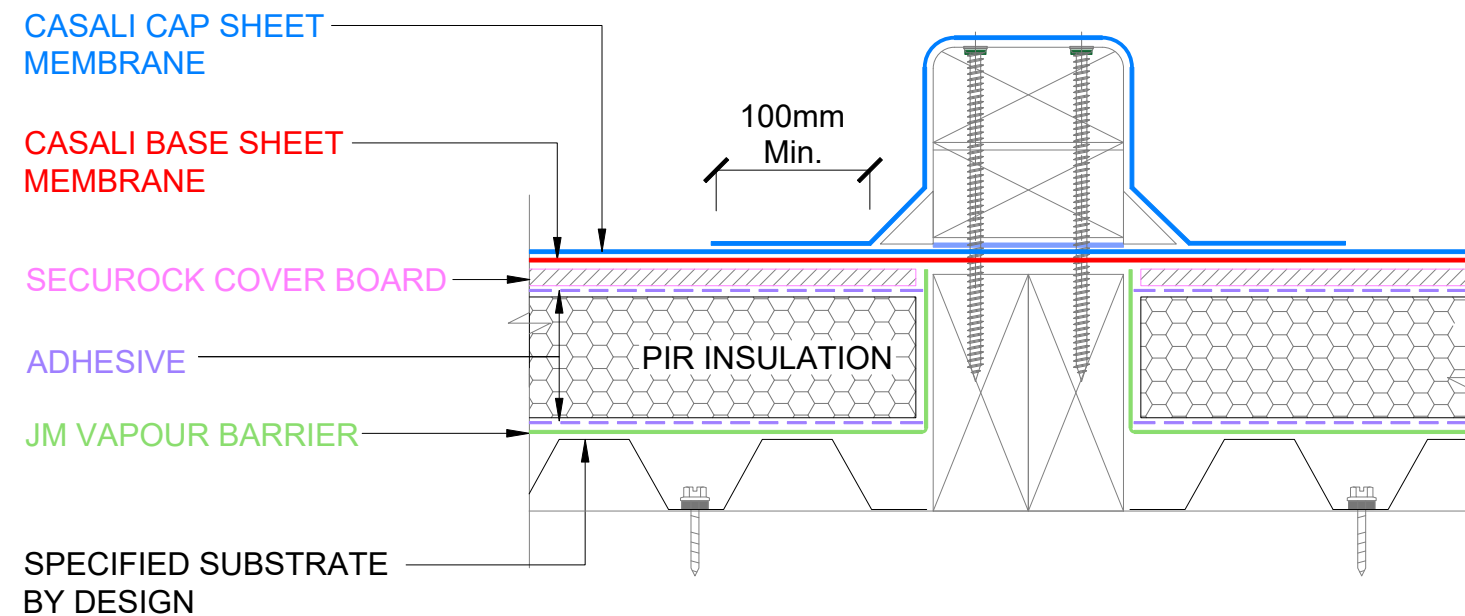
For Technical Advice Contact:
Web: www.allco.co.nz
Email: info@allco.co.nz
Telephone: 09 448 1185
Facsimile: 09 448 1186



DRAWN BY: ALLCO	DATE: 04/2020
DRAWING REF: WR-006A	REV: 1



A PLANTWORK PLINTH



B TIMBER PLINTH / UPSTAND

1 WARM ROOF - CASALI - PLANTWORK FIXING PLINTH
SCALE: NTS METAL TRAY SUBSTRATE



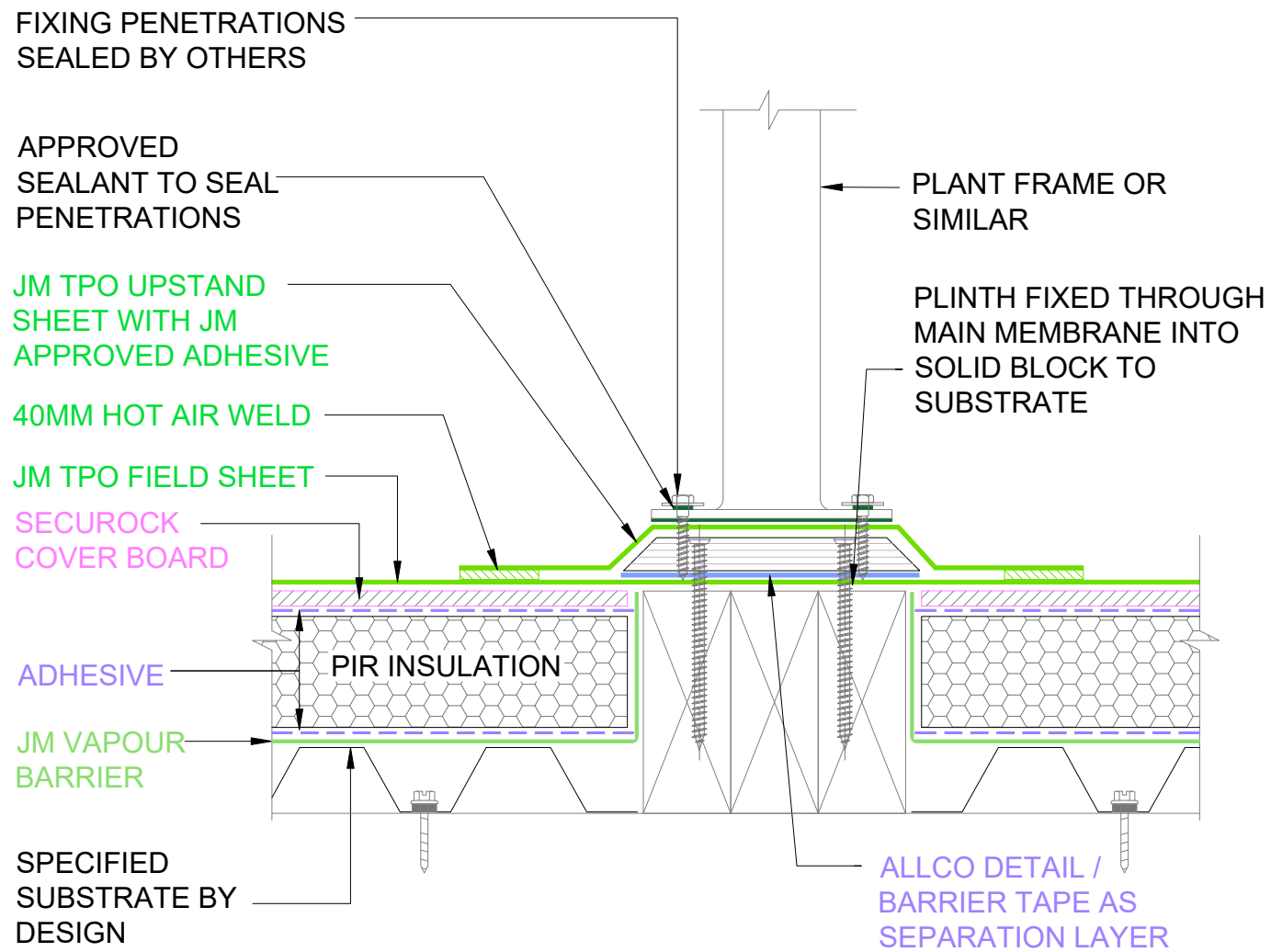
The information and data contained herein are believed to be accurate and reliable. This information does not constitute a warranty and should be used in conjunction with the project specification document supplied by Allco Waterproofing Solutions Ltd. Please contact Allco Waterproofing Solutions Ltd with any questions or deviations from this information.
© Allco Waterproofing Solution Ltd

For Technical Advice Contact:
Web: www.allco.co.nz
Email: info@allco.co.nz
Telephone: 09 448 1185
Facsimile: 09 448 1186

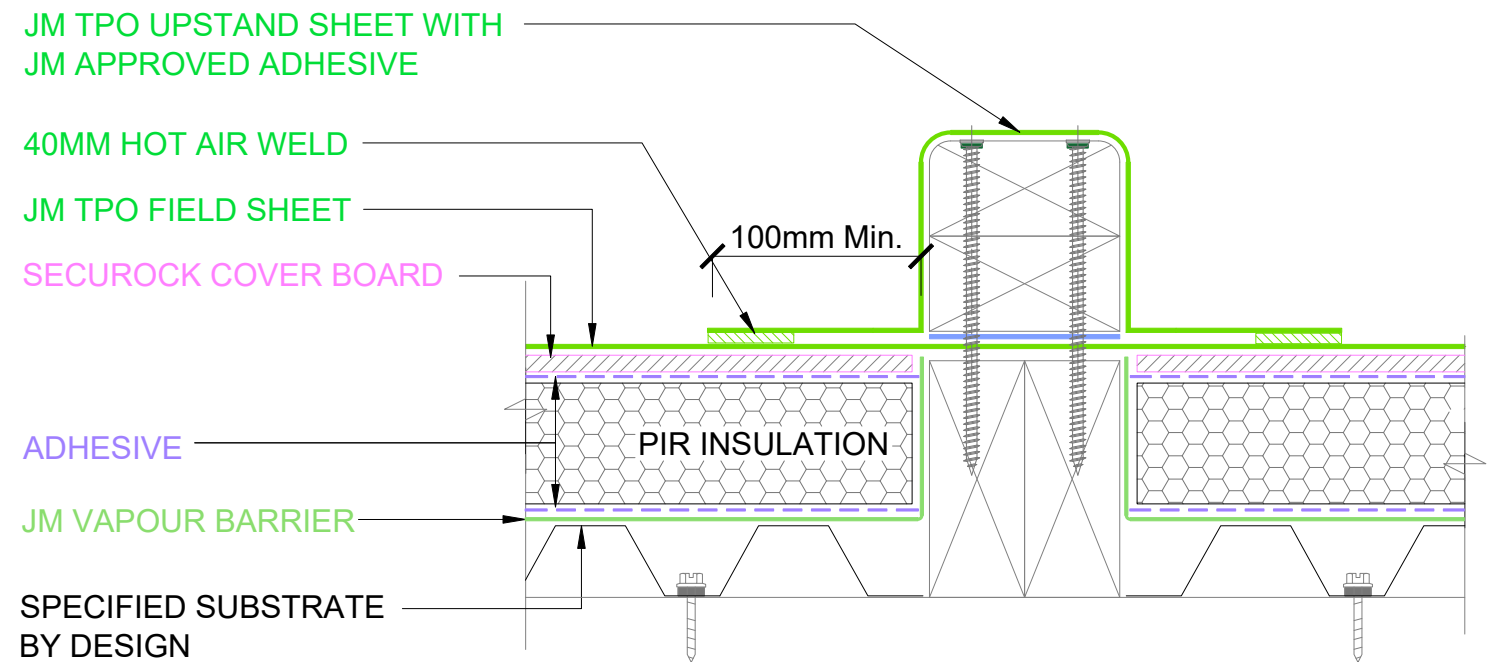


DRAWN BY: ALLCO
DATE: 04/2020

DRAWING REF: WR-006B
REV: 1



A PLANTWORK PLINTH



B TIMBER PLINTH / UPSTAND

1 WARM ROOF - JM TPO - PLANTWORK FIXING PLINTH
SCALE: NTS METAL TRAY SUBSTRATE



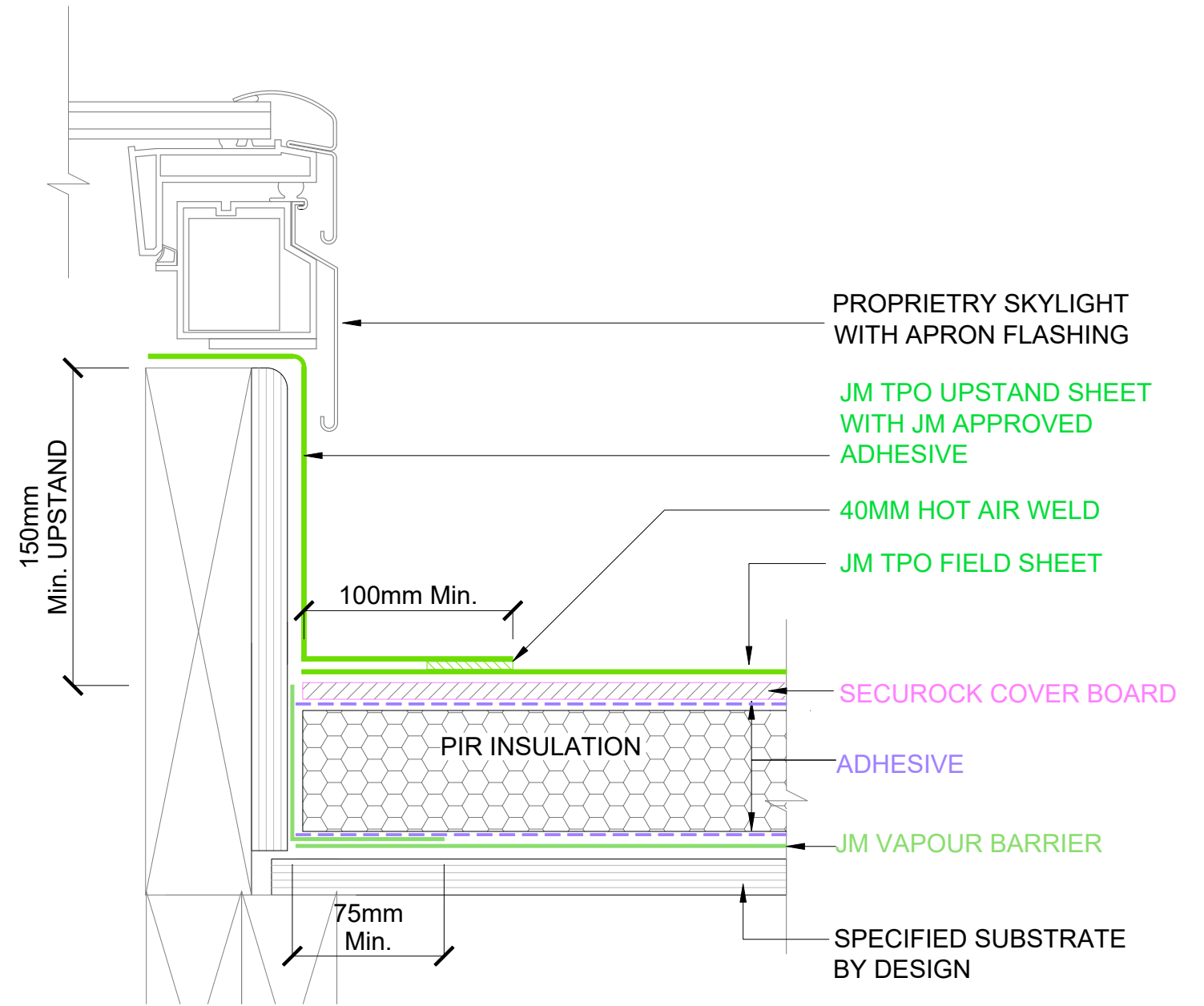
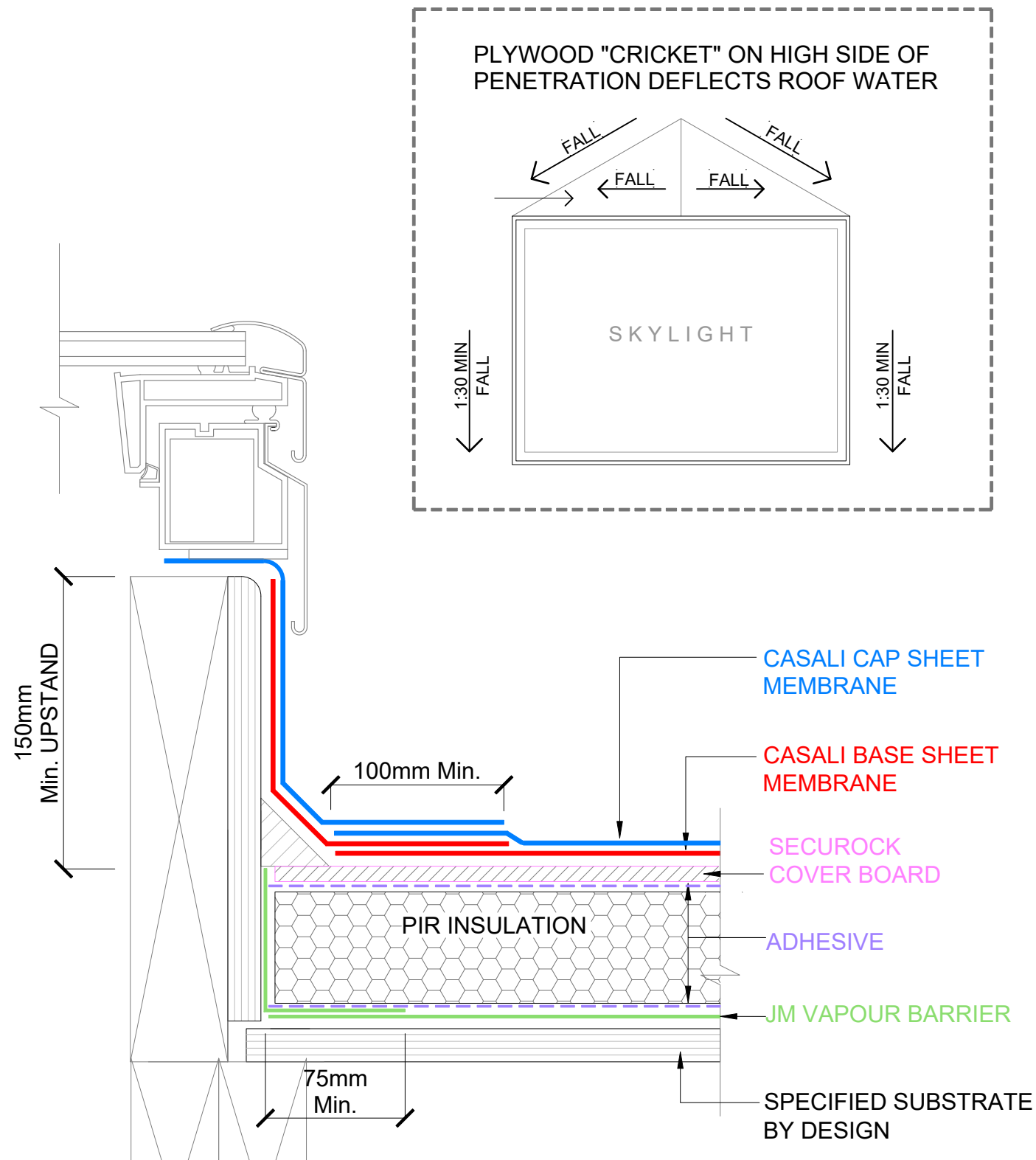
The information and data contained herein are believed to be accurate and reliable. This information does not constitute a warranty and should be used in conjunction with the project specification document supplied by Allco Waterproofing Solutions Ltd. Please contact Allco Waterproofing Solutions Ltd with any questions or deviations from this information.
© Allco Waterproofing Solution Ltd

For Technical Advice Contact:
Web: www.allco.co.nz
Email: info@allco.co.nz
Telephone: 09 448 1185
Facsimile: 09 448 1186



DRAWN BY: ALLCO
DATE: 04/2020

DRAWING REF: WR-006C
REV: 1



1 WARM ROOF - CASALI - SKYLIGHT PLINTH

SCALE: NTS

2 WARM ROOF - JM TPO - SKYLIGHT PLINTH

SCALE: NTS



The information and data contained herein are believed to be accurate and reliable. This information does not constitute a warranty and should be used in conjunction with the project specification document supplied by Allco Waterproofing Solutions Ltd. Please contact Allco Waterproofing Solutions Ltd with any questions or deviations from this information.
© Allco Waterproofing Solution Ltd

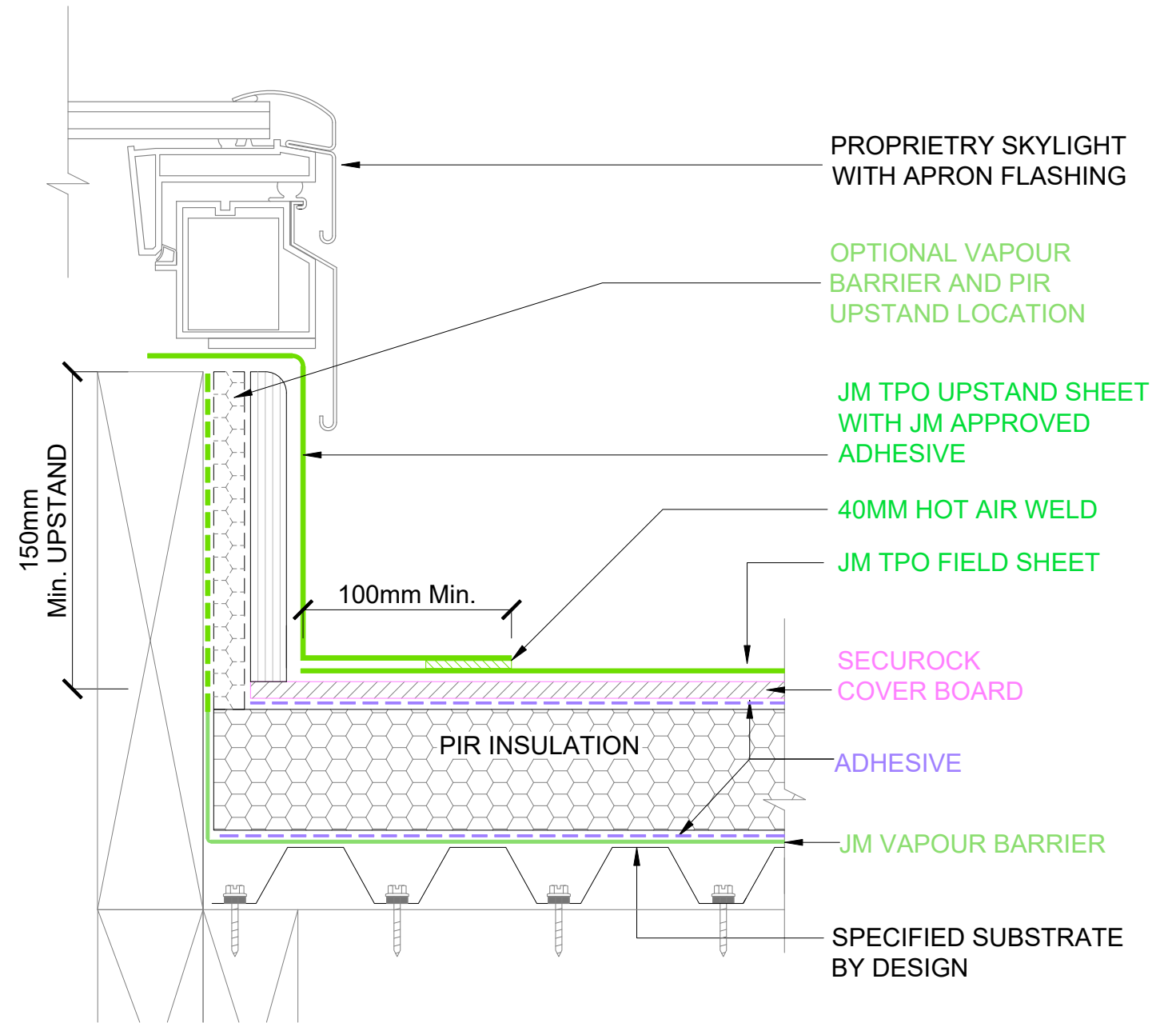
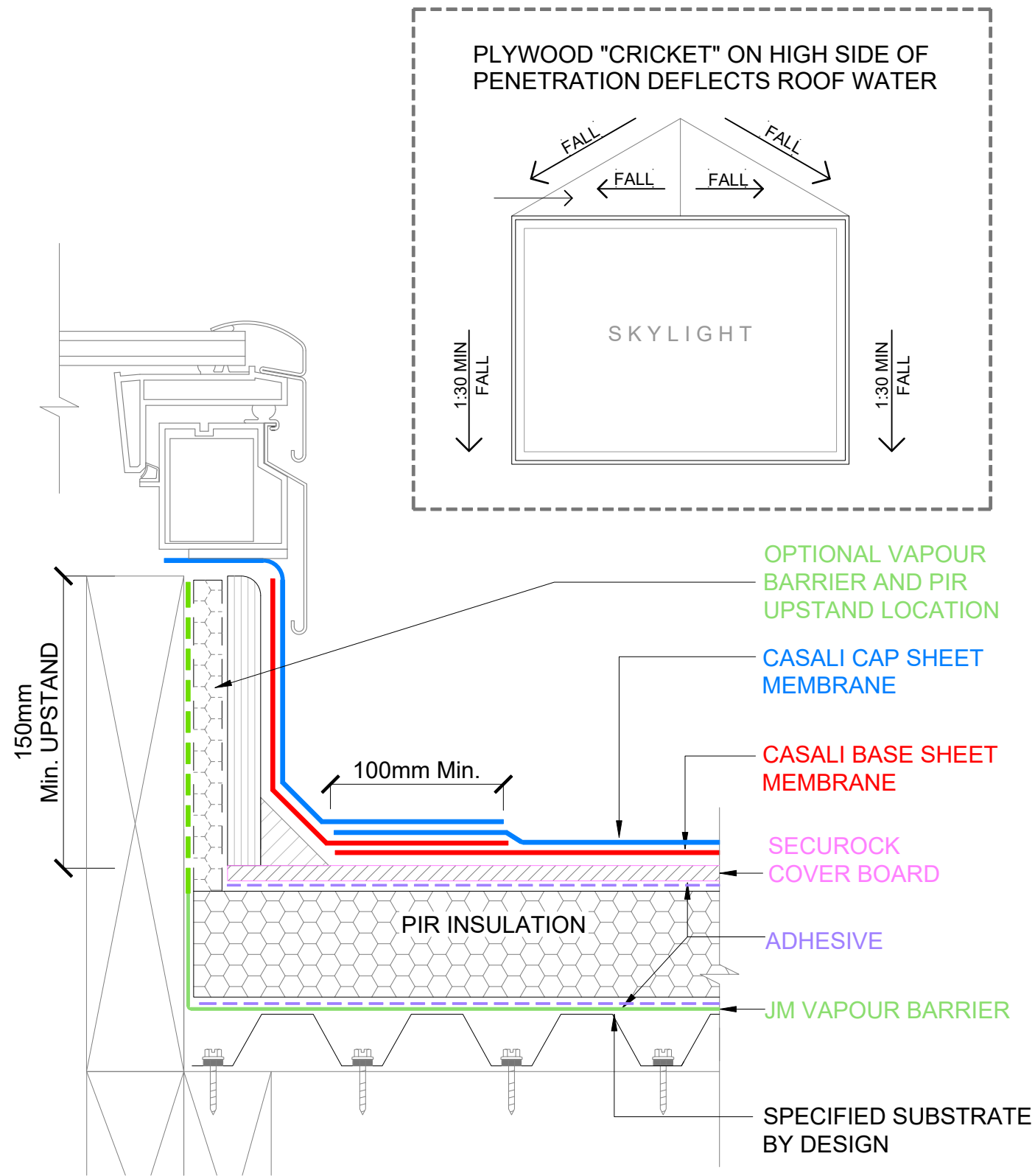
For Technical Advice Contact:
Web: www.allco.co.nz
Email: info@allco.co.nz
Telephone: 09 448 1185
Facsimile: 09 448 1186



DRAWN BY: ALLCO
DATE: 04/2020

DRAWING REF: WR-007

REV: 1



1 WARM ROOF - CASALI - SKYLIGHT PLINTH

SCALE: NTS

METAL TRAY SUBSTRATE

2 WARM ROOF - JM TPO - SKYLIGHT PLINTH

SCALE: NTS

METAL TRAY SUBSTRATE



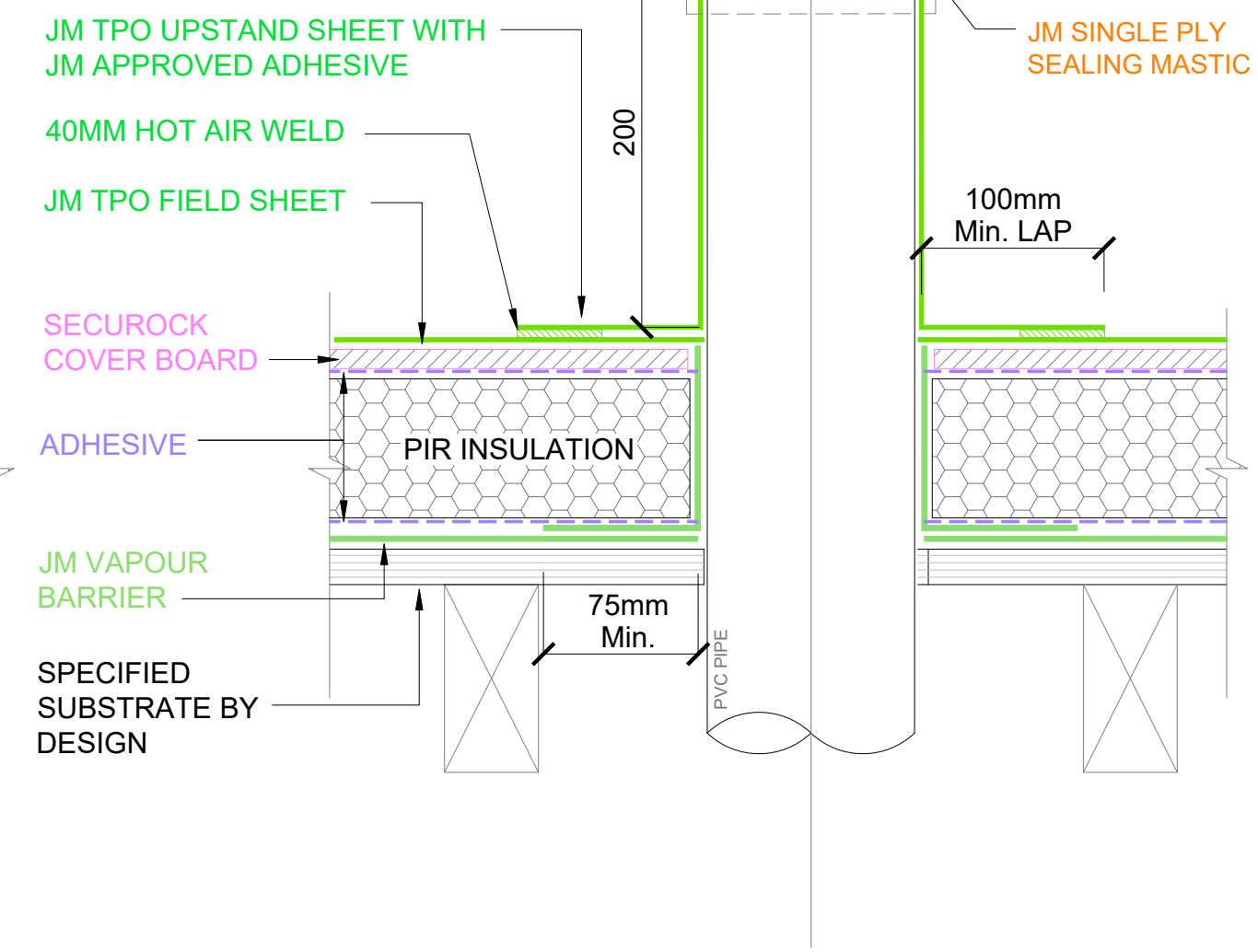
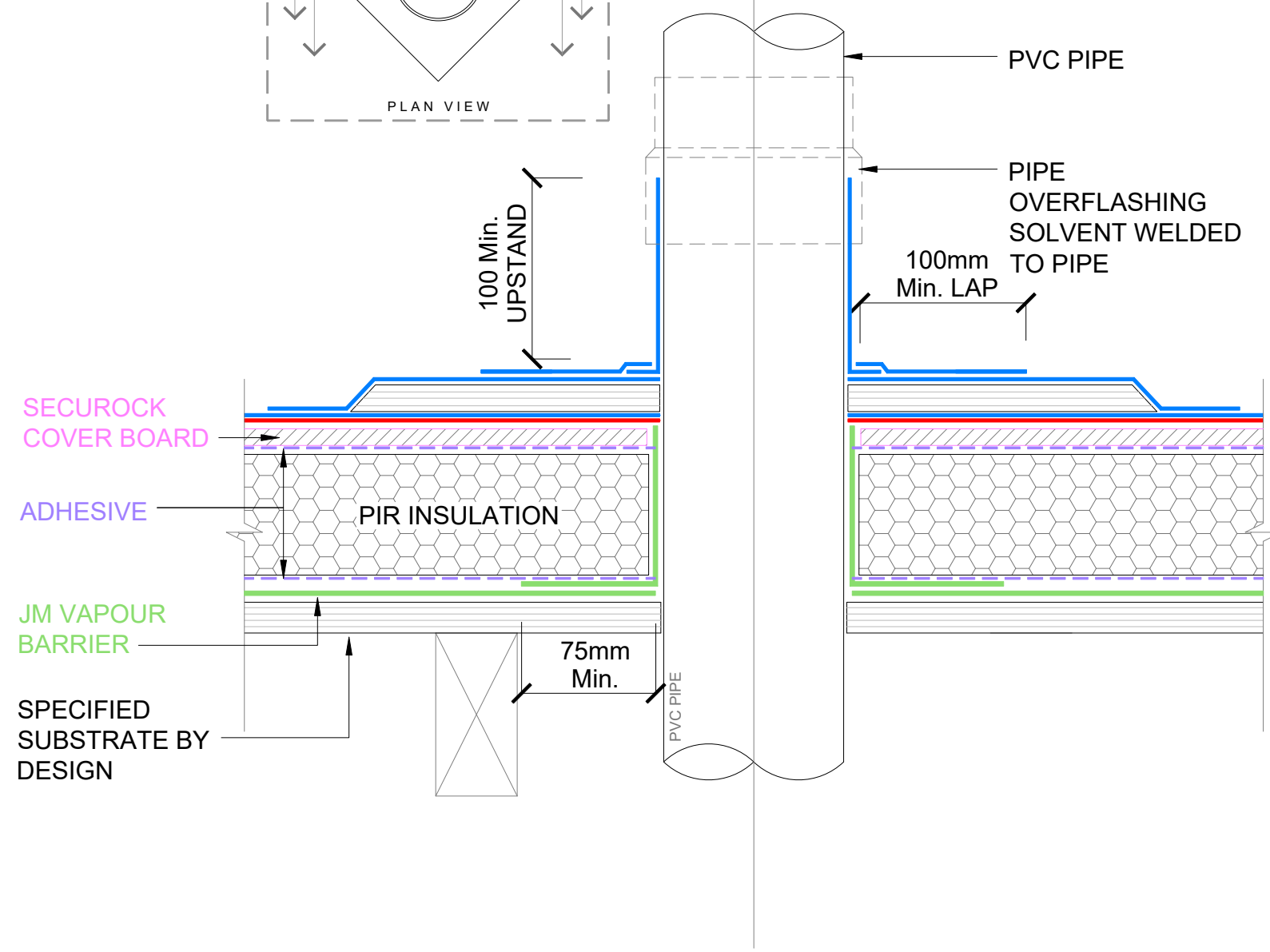
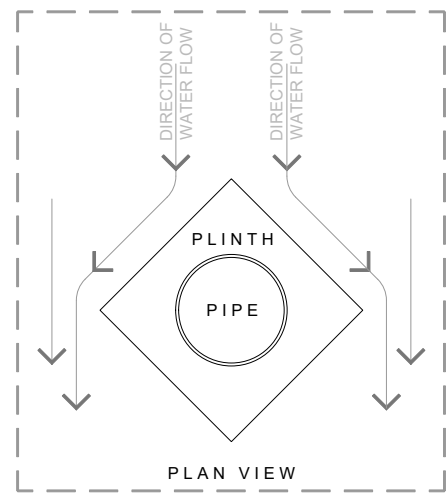
The information and data contained herein are believed to be accurate and reliable. This information does not constitute a warranty and should be used in conjunction with the project specification document supplied by Allco Waterproofing Solutions Ltd. Please contact Allco Waterproofing Solutions Ltd with any questions or deviations from this information.
© Allco Waterproofing Solution Ltd

For Technical Advice Contact:
Web: www.allco.co.nz
Email: info@allco.co.nz
Telephone: 09 448 1185
Facsimile: 09 448 1186



DRAWN BY: ALLCO
DATE: 04/2020

DRAWING REF: WR-007A
REV: 1



1 WARM ROOF - CASALI - PIPE PENETRATION
SCALE: NTS

2 WARM ROOF - JM TPO - PIPE PENETRATION
SCALE: NTS

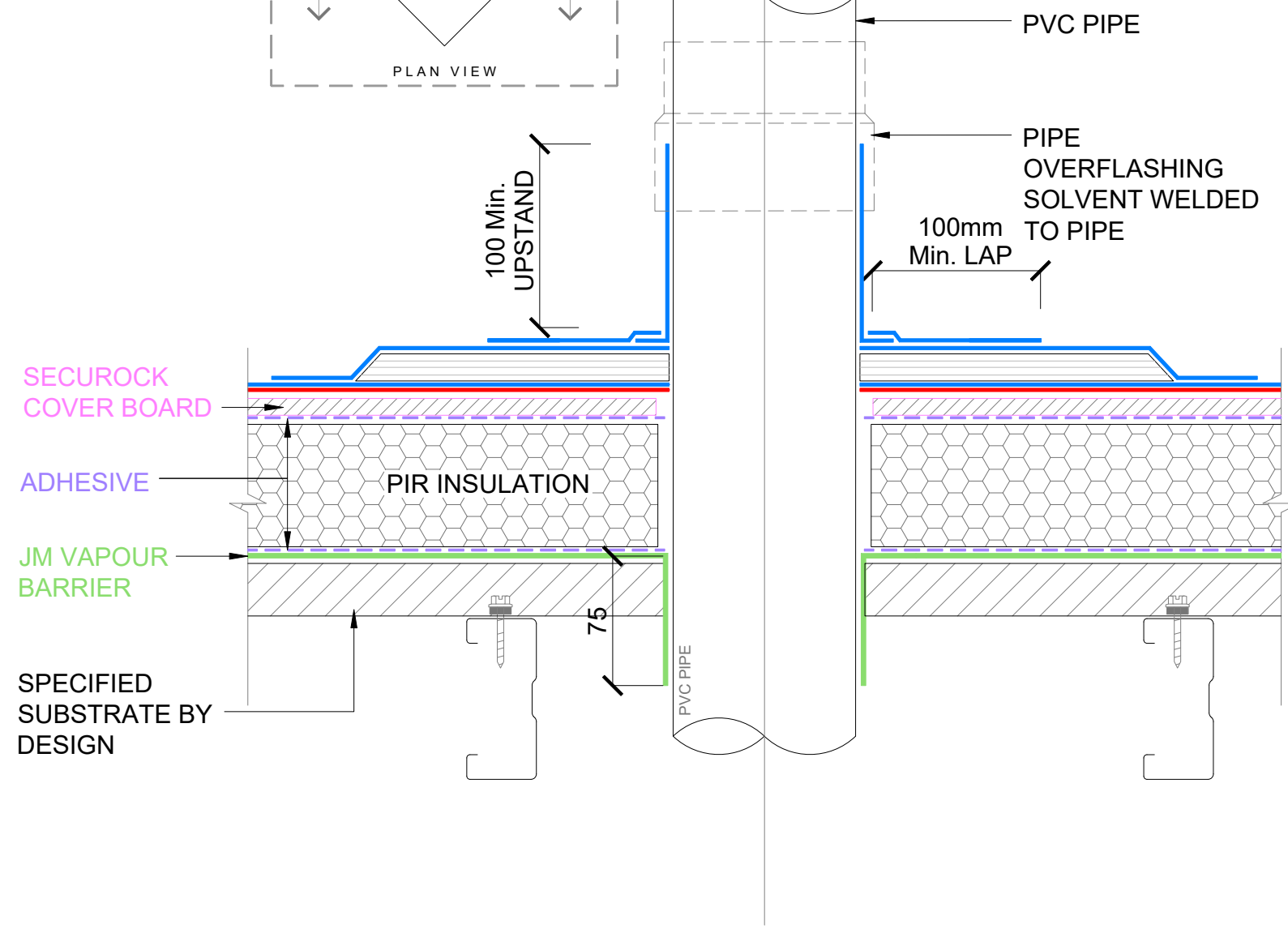
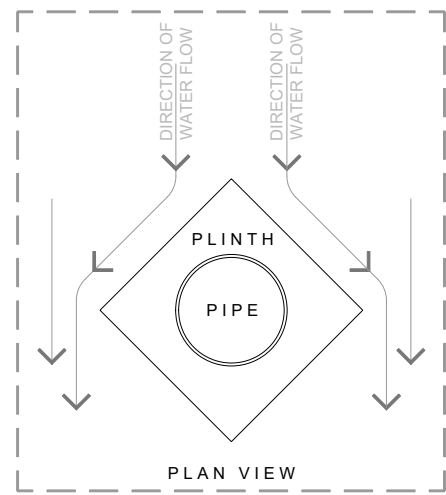


The information and data contained herein are believed to be accurate and reliable. This information does not constitute a warranty and should be used in conjunction with the project specification document supplied by Allco Waterproofing Solutions Ltd. Please contact Allco Waterproofing Solutions Ltd with any questions or deviations from this information.
© Allco Waterproofing Solution Ltd

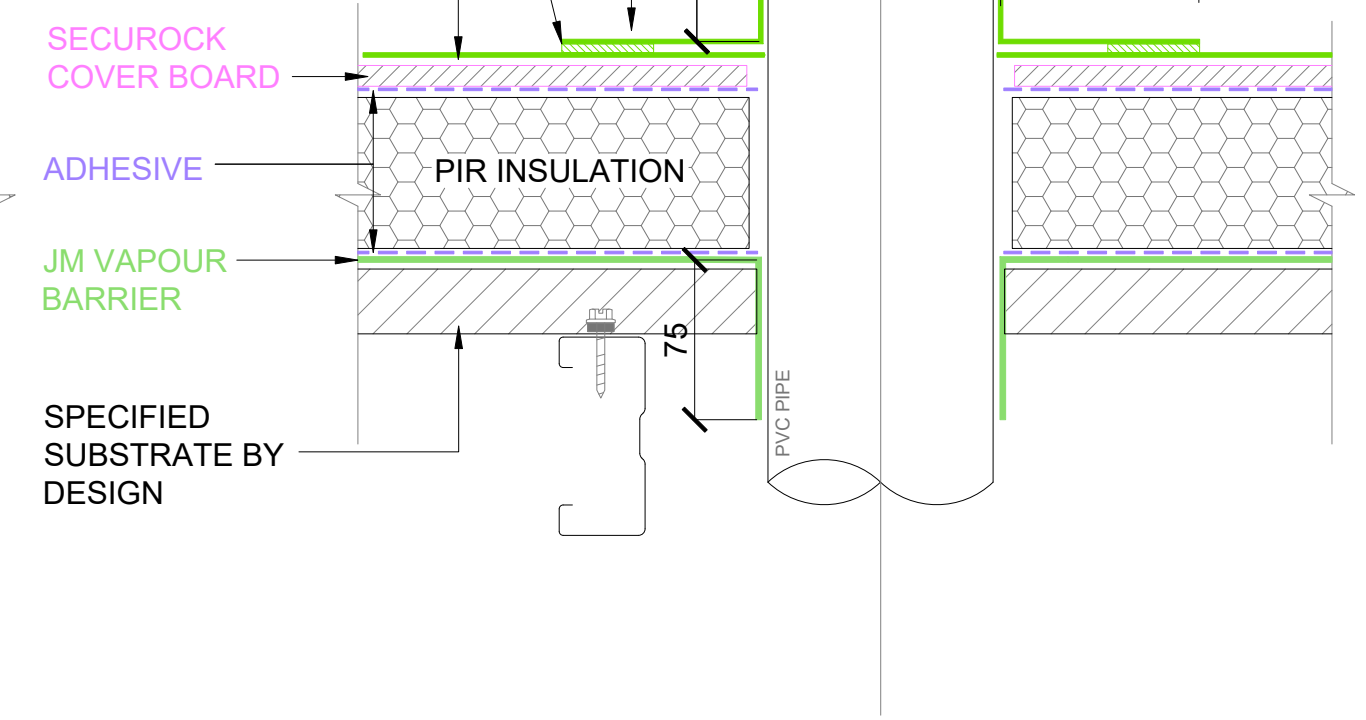
For Technical Advice Contact:
Web: www.allco.co.nz
Email: info@allco.co.nz
Telephone: 09 448 1185
Facsimile: 09 448 1186



DRAWN BY: ALLCO	DATE: 04/2020
DRAWING REF: WR-008	REV: 1



JM TPO UPSTAND SHEET WITH
JM APPROVED ADHESIVE
40MM HOT AIR WELD
JM TPO FIELD SHEET



1 WARM ROOF - CASALI - PIPE PENETRATION
SCALE: NTS METAL TRAY SUBSTRATE

2 WARM ROOF - JM TPO - PIPE PENETRATION
SCALE: NTS METAL TRAY SUBSTRATE



The information and data contained herein are believed to be accurate and reliable. This information does not constitute a warranty and should be used in conjunction with the project specification document supplied by Allco Waterproofing Solutions Ltd. Please contact Allco Waterproofing Solutions Ltd with any questions or deviations from this information.
© Allco Waterproofing Solution Ltd

For Technical Advice Contact:
Web: www.allco.co.nz
Email: info@allco.co.nz
Telephone: 09 448 1185
Facsimile: 09 448 1186



DRAWN BY: ALLCO	DATE: 04/2020
DRAWING REF: WR-008A	REV: 1

CASALI CAP
SHEET MEMBRANE

CASALI BASE
SHEET MEMBRANE

SOLID TIMBER PLATE
TO ROOF EDGE

RAINWATER SYSTEM
BY OTHERS

ALUM OR S/S FIXING BAR
TO SECURE MEMBRANE TO
METAL DRIP-EDGE.
FIXINGS @ 300 CTRS MAX

2MM ALUM OR
S/S ANGLE 50X50MM MIN.

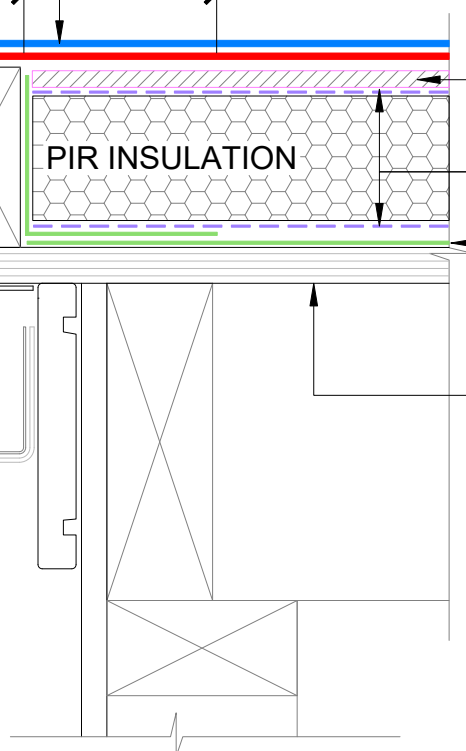
75 lap

SECUROCK
COVER BOARD

ADHESIVE

JM VAPOUR
BARRIER

SPECIFIED
SUBSTRATE
BY DESIGN



1

WARM ROOF - CASALI - DRIP EDGE

SCALE: NTS

JM TPO FIELD SHEET

SOLID TIMBER PLATE
TO ROOF EDGE

JM TPO MEMBRANE
WELDED TO TPO
COATED DRIP EDGE

RAINWATER SYSTEM
BY OTHERS

40MM HOT AIR WELD

TPO COATED GALV
STEEL ANGLE

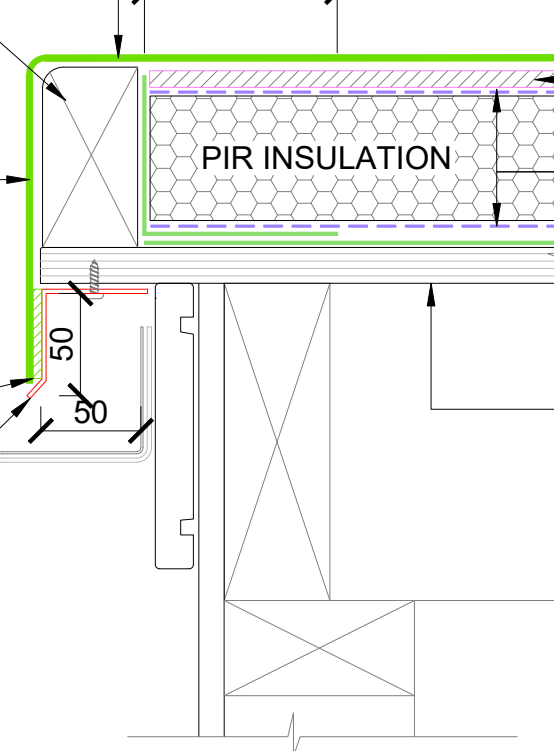
75 lap

SECUROCK
COVER BOARD

ADHESIVE

JM VAPOUR
BARRIER

SPECIFIED
SUBSTRATE
BY DESIGN



2

WARM ROOF - JM TPO - DRIP EDGE

SCALE: NTS



The information and data contained herein are believed to be accurate and reliable. This information does not constitute a warranty and should be used in conjunction with the project specification document supplied by Allco Waterproofing Solutions Ltd. Please contact Allco Waterproofing Solutions Ltd with any questions or deviations from this information.
© Allco Waterproofing Solution Ltd

For Technical Advice Contact:
Web: www.allco.co.nz
Email: info@allco.co.nz
Telephone: 09 448 1185
Facsimile: 09 448 1186

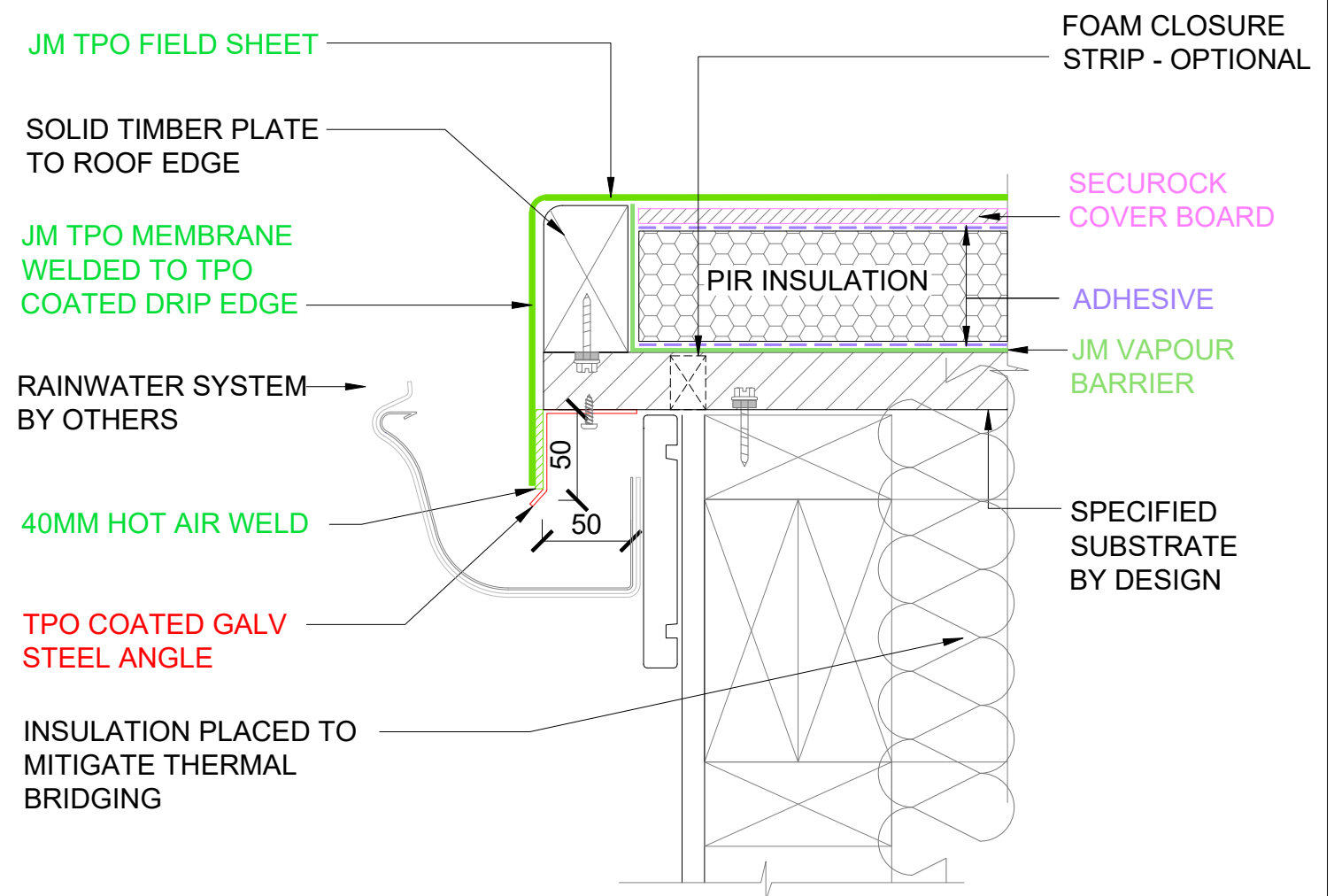
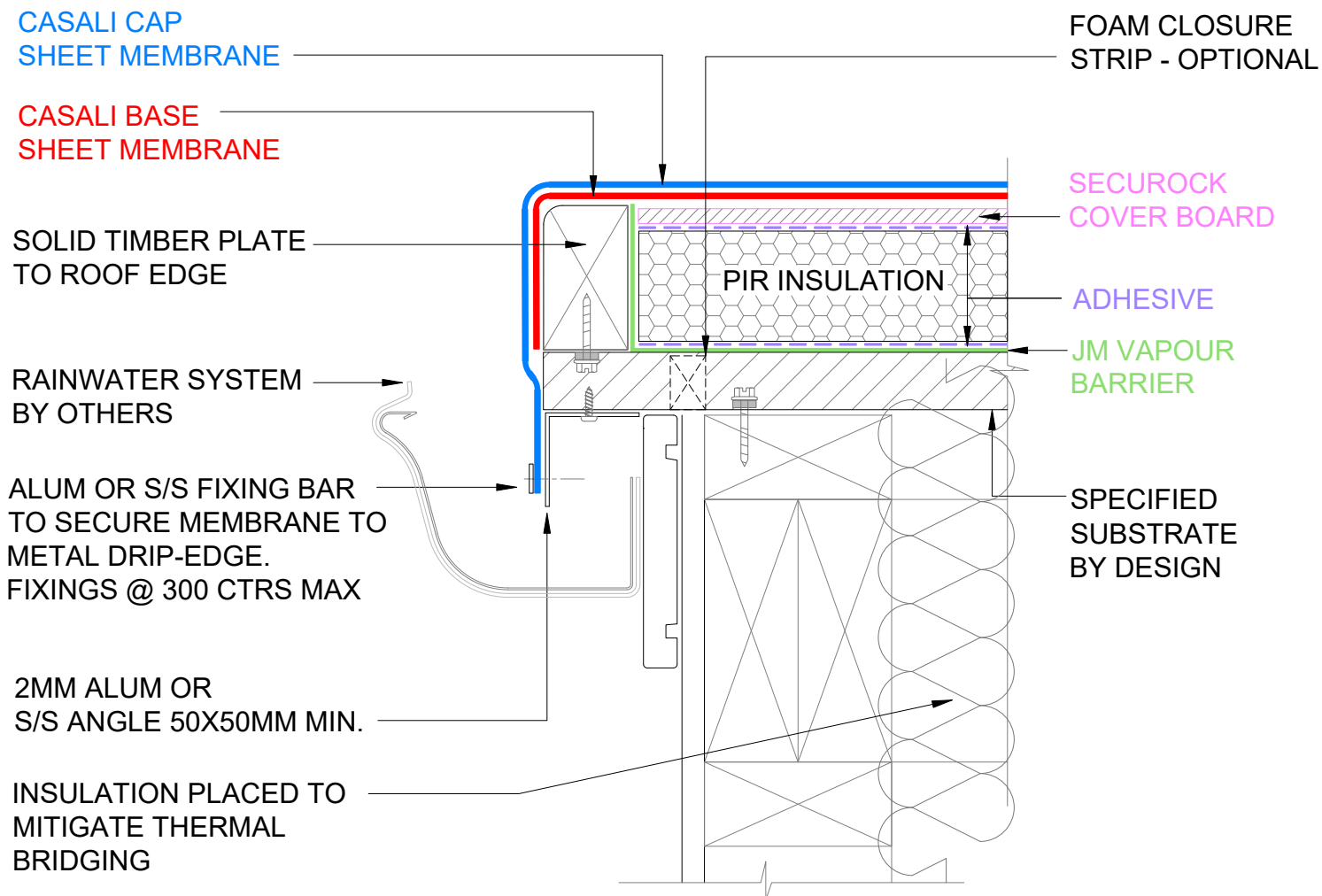


DRAWN BY:
ALLCO

DATE:
04/2020

DRAWING REF:
WR-009

REV:
1



1 WARM ROOF - CASALI - DRIP EDGE
SCALE: NTS METAL TRAY SUBSTRATE

2 WARM ROOF - JM TPO - DRIP EDGE
SCALE: NTS METAL TRAY SUBSTRATE



The information and data contained herein are believed to be accurate and reliable. This information does not constitute a warranty and should be used in conjunction with the project specification document supplied by Allco Waterproofing Solutions Ltd. Please contact Allco Waterproofing Solutions Ltd with any questions or deviations from this information.
© Allco Waterproofing Solution Ltd

For Technical Advice Contact:
Web: www.allco.co.nz
Email: info@allco.co.nz
Telephone: 09 448 1185
Facsimile: 09 448 1186



DRAWN BY: ALLCO	DATE: 04/2020
DRAWING REF: WR-009A	REV: 1