

FC13486-001 Issue 1

Technical Opinion Summary



This is to certify that the specimen described below has been examined by BRANZ on behalf of the sponsor.

Sponsor

Elephant Plasterboard (NZ) Ltd
14 Bancroft Crescent
Glendene
Auckland, 0602
New Zealand

Reference BRANZ Reports FC13486-001 Issue 1

Referenced Standard AS1530.4 up to and including the 2005 version

Specimen Name: Elephant Non-loadbearing steel stud deflection head details.

Specimen Description:

Elephant Plasterboard steel stud non-loadbearing walls with a deflection head detail. The deflection head consists of a top track or deflection head top track with a packer between the concrete slab and top track. Fire rated sealant is to be applied to each face of the packer either to the depth of the plasterboard or as specified by the sealant manufacturer.

See Figure 1 to Figure 3 for details.

Orientation: Exposure from either side

The assessed results were as follows

It is considered the deflection head details as shown in Figure 1 to Figure 3 would maintain the fire resistance of the Elephant Plasterboard non-loadbearing steel stud walls if tested in accordance with various versions of AS 1530.4 up to and including the 2005 version.

Issued by

A handwritten signature in blue ink, appearing to read "P. Chapman".

Paul Chapman
Senior Fire Testing Engineer

Reviewed by

A handwritten signature in blue ink, appearing to read "E. Soja".

E. Soja
Senior Fire Safety Engineer

*Regulatory authorities are advised to examine
Technical Opinion FC13486-001 before
approving any product.*

Issue Date

22 October 2020

Expiry Date

22 October 2025

Figure 1: Up to 10 mm deflection

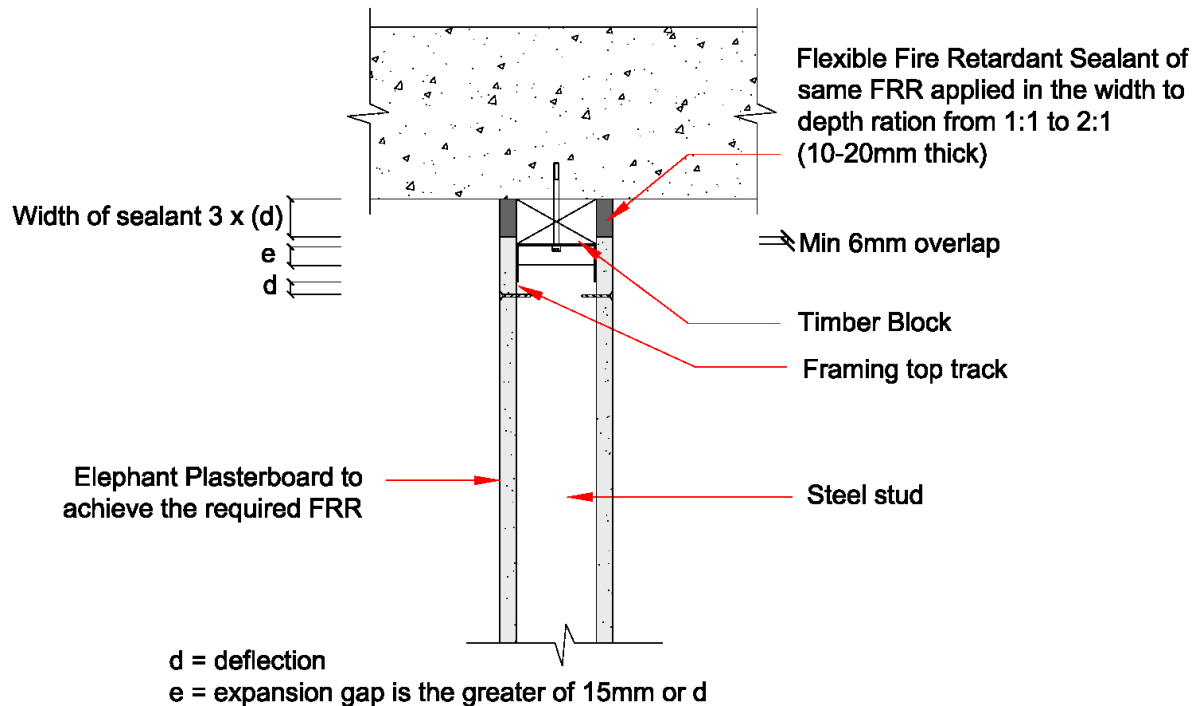
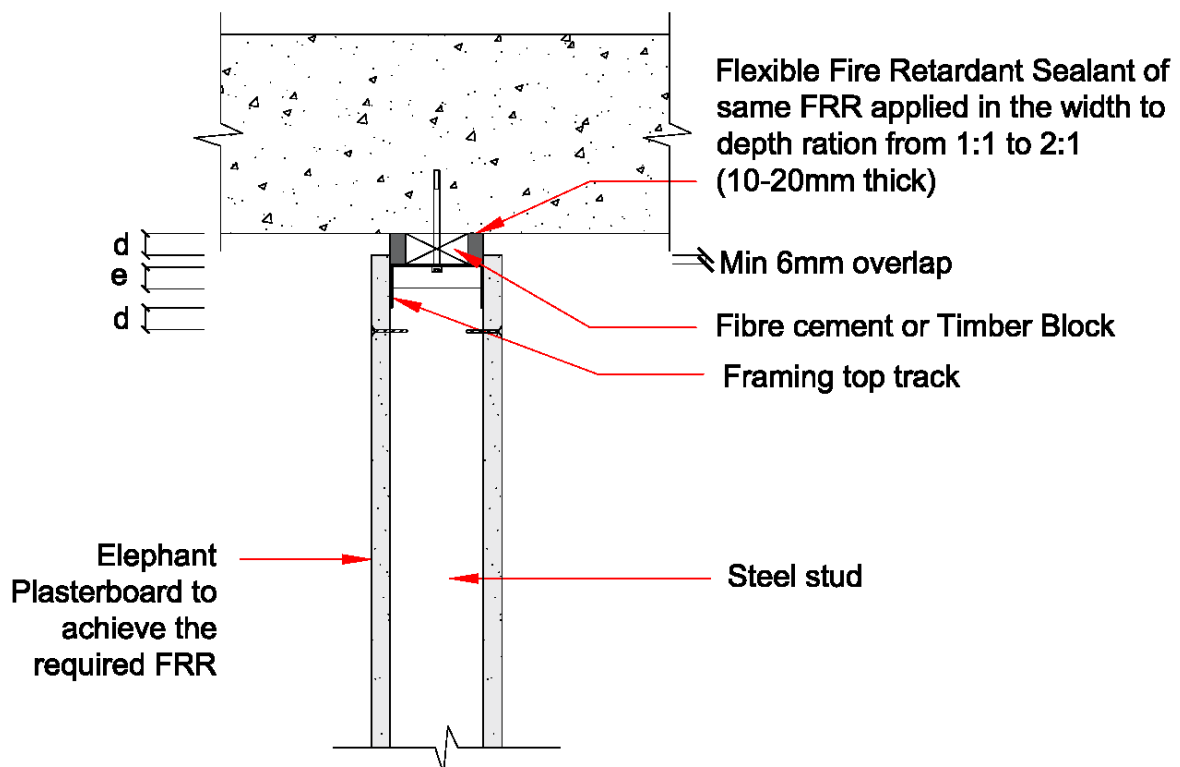
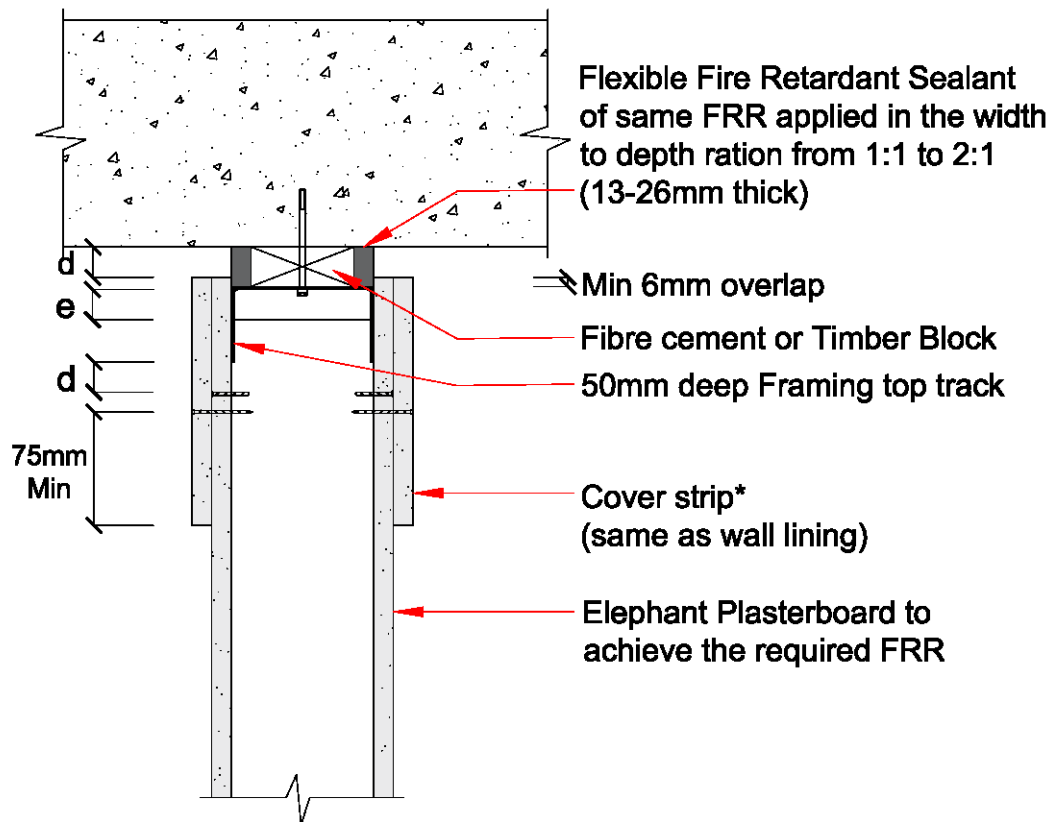


Figure 2: Between 10 mm to 20 mm deflection



d = deflection
e = expansion gap is the greater of 15mm or d

Figure 3: Greater than 20 mm deflection



d = deflection

e = expansion gap is the greater of 15mm or d

***Note:** If Plasterboard is cantilevered 75mm or more past the top screw use additional cover strip on single layer sides