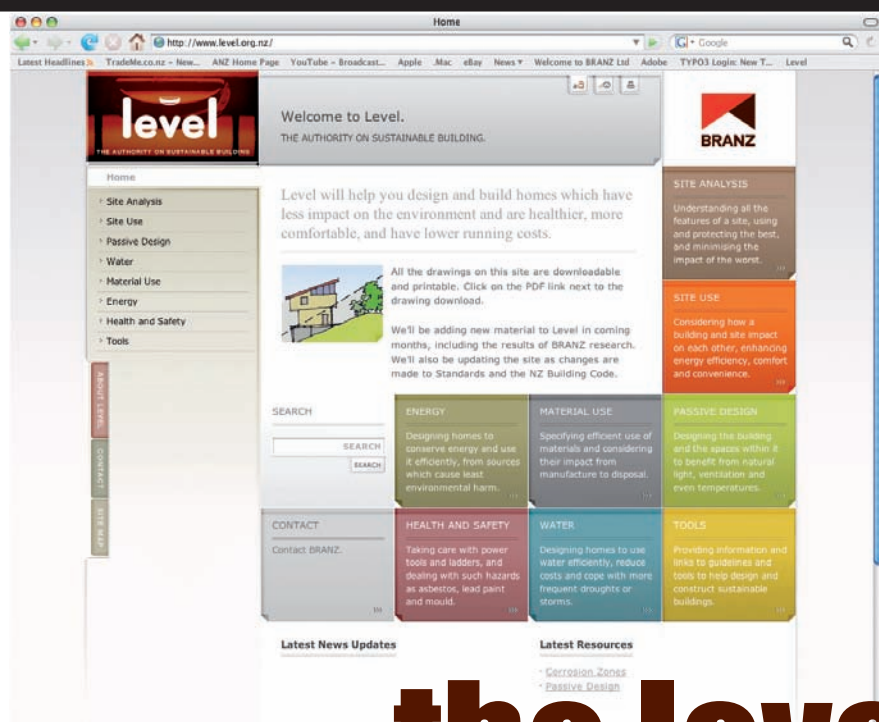


BUILDER'S MATE

ISSUE 24 | AUGUST 2007


Getting it on the level

A new website packed with practical information and advice about sustainable building has just been launched by BRANZ.

Level.org.nz has been produced specifically for New Zealand, so the materials and construction methods can be used here. The site covers energy use and water use, passive design, building materials and site analysis, and it also refers to software tools which can be used to design energy efficient homes. The information applies to renovations as well as new buildings.

"There's been a lot of talk about the need to build sustainably, but comparatively little available in the way of technical information from an independent perspective and with a New Zealand focus," said Chris Kane, Science Communication Manager at BRANZ.

Level carries the results of over 15 years of scientific research which BRANZ has conducted into sustainability. The site is impartial, has been funded by the Building Research Levy and doesn't carry any advertising.

Chris Kane said that while the new site was aimed primarily at those in the construction industry, experienced DIYers would also find it of use.

While Level.org.nz was put together for industry, a complementary website which covers similar topics from a homeowner's point of view has also been launched. ➤

INDUSTRY NEWS

Removing LOSP Solvent

Solvent emissions from LOSP-treated timber have raised safety and environmental concerns, but a system developed by an Auckland company is one step to dealing with these.

Crusader Engineering Ltd has patented a process which removes and recovers solvent from wood treated with light organic solvent (LOSP). The solvent can be re-used. The benefit for workers is that the timber produces fewer VOC (volatile organic compound) emissions.

The first commercial plant to use the process will be offshore, and should be fully operational in October.

In the meantime, when you receive LOSP-treated timber on-site place it in a covered, well-ventilated space and remove the protective wrap. Where you can, leave the pack open for a day or two before you use it.

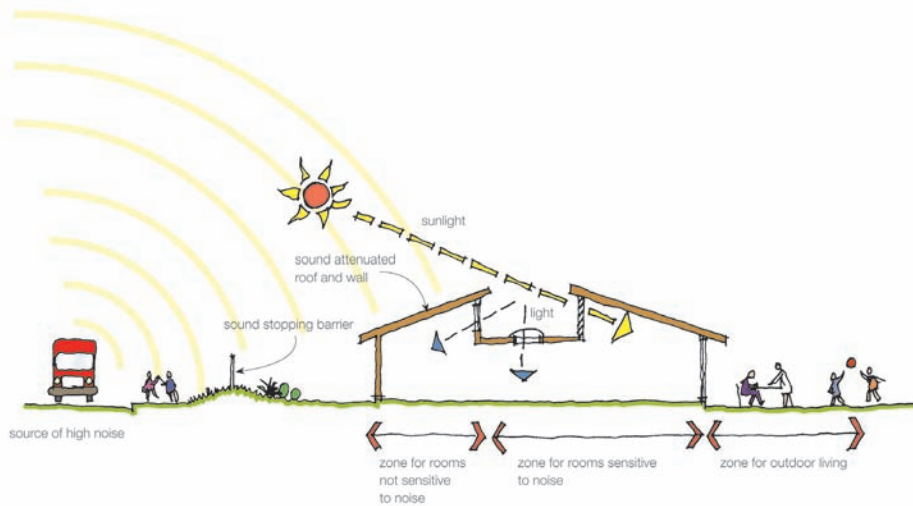
HAMMER 'N' NAILS

COULDN'T WE HIRE A GENERATOR LIKE OTHER BUILDERS?


Win!

A Morgan Flip Over Mitre/Bench Saw worth \$999





The website www.level.org.nz is well illustrated.

Continued from previous page

www.smarterhomes.org.nz was commissioned by the Ministry for the Environment and put together by Consumers' Institute.

If you're in the building industry, it's a good site to point your clients towards.

The site includes a Homesmarts calculator where users can customise their searches and information needs according to budget

priorities, current renovation or building projects, and major problems they want to solve in their homes. The calculator also offers an opportunity to prioritise these issues and problems by running a simple home health-check.



PRODUCT INFORMATION



A 10 year guarantee to stop black mould is what sets Forever White apart from other silicone sealants on the market. It can be used around showers, baths, basins, and other places where a flexible waterproof seal is required.

Forever White is produced by the UK-based company Everbuild Building products.

Dribblings from the Old Geezer



The old days of imperial measurements spawned 'rules of thumb' that were easy to remember. One is that concrete slabs dry at the rate of approximately one inch of thickness per month – so a 6 inch slab will take roughly 6 months to be fully dry.

What a lot of us old codgers fail to recognise is that now we've been metric for 30 years a chunk of our workforce that doesn't know what an inch is. True! A 6 inch slab means nothing to them. A slab is 100 mm or 150 mm or 200 mm. Expecting our future builders to remember old measurements is the same as us less youthful ones having to remember what a rod or pole or perch is.

What I am trying to say is to move on. It might have been handy 40 years ago, but it mightn't even be right now. Find out the right information and use it. And by the way, a rod, pole and perch are all the same. A gallon of beer was bigger than a gallon of wine, and a Scottish pint was three and a half times bigger than the English wine measure. What's a gnat's whisker? Probably a few of them make a tad...

Des Molloy

BRANZ

ADVISORY HELPLINES

For the building and construction industry

0800 80 80 85

For the home owner and public enquiries

0900 5 90 90

Calls cost \$1.99 per minute plus GST

www.branz.co.nz

At a glance

Leads step by step

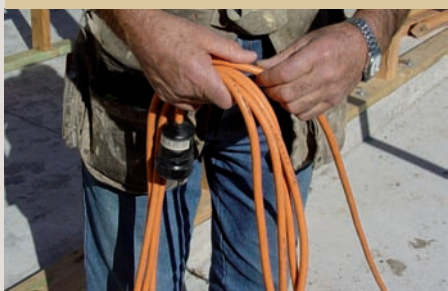
Coil up your extension leads properly. They won't tangle and you'll save time.



1. Don't make loops round your elbow - that doesn't give the same result. Instead, take an arm's length of cord and gather it towards you.



2. As you bring the loops together, give the lead a slight twist between thumb and forefinger. This will ensure each loop hangs straight.



3. A second twist may be necessary as you collect the loops together.



4. Make long, straight loops of even length. This will prevent the lead tangling when it's pulled out for use.



5. To finish, wind a couple of loops around the body of the coil and tuck the end through the top. Your lead is now ready to hang or store.

Timber weatherboards

Weatherboards have become a fashionable cladding again. Most installations are the bevelback profile. These boards are designed to have a 32 mm minimum overlap to protect against water entry.

For rusticated timber boards it is important that they are correctly installed with a 2 mm minimum gap between the horizontal surfaces of the lap to allow some movement to occur. Where boards are installed hard together without the gap, cupping of the boards and cracking may occur.

Timber is a natural product and may move after it is installed, meaning that small gaps may open up. These are best left as is. Don't be tempted to seal up the gaps at the bottom edge of the lap. (See NZS 3604 section 11 and E2/AS1 table 24.)

For all timber weatherboards the effect of movement will be reduced with light coloured paint, finger-jointed timber, narrower rather than wider boards and just a single fixing at each stud (located just above the lap).

Tops of cavities

When constructing a drained and vented cavity it is extremely important that the top of the cavity does not allow (damp) air to move into skillion roof spaces, attic roof spaces or enclosed soffits or verges.

Closing off the top can be done with a continuous horizontal top batten (the only continuous horizontal batten permitted), solid blocking between roof framing members or a soffit lining. Where a soffit lining is used the detail must ensure that water is not able to track between the soffit lining and the top of the cladding or between the raked cut edge of a cladding and the lining down the verge.

Where a cladding is installed over a cavity to a gable end an air barrier must be incorporated between the cavity and the attic roof space to prevent moist air entry.

COMPETITION

Win!

**A Morgan Flip Over
Mitre/Bench
worth \$999!**



This amazing piece of equipment is a fully functional mitre saw on a stand, and with the flick of a lever the whole unit flips over to become a tilting arbor saw bench. Ideal for onsite builders, this bench combines two commonly used machines in one. Easily portable, its net weight is 32kg and dimensions 800 mm x 670 mm x 520 mm. The motor is 1600 watts and blade size, 250 mm.

The prize is provided courtesy of The Tool Shed.

1. All you need to win is tell us the name of the mystery tool and what it's used for.
2. Send us your answer plus your name, address and telephone number on the back of an envelope. Post it (you don't need a stamp) to: Builder's Mate 24, Mystery Tool Competition, FREEPOST BRANZ, Private Bag 50908, Porirua City 5240. One entry per entrant please.
3. Don't forget to tell us where you picked up your copy of Builder's Mate! The winner will be the first correct entry drawn on Friday 31 August 2007. Details will be posted on the www.branz.co.nz and in the next edition of *Builder's Mate*, due out on 1 October 2007.

?

**What is the name of this pictured
tool and what is it used for?**



Terms and conditions:

Entry is open to all New Zealand residents except employees and immediate families of BRANZ Ltd, BRANZ Inc, BRANZ Pty and The Tool Shed shops. The competition will close on Friday 31 August 2007. The prize is not transferable for cash. The judge's decision is final. No correspondence will be entered into. BRANZ Ltd may, from time to time, send you information about our products. You can contact us at any time if you do not wish to receive this information.

BUILDER'S MATE WINNERS



Builder's Mate 22 winner Linda Gilmour of Royal Oak, Auckland, receives her prize of a Galaxy leveller extension ladder from the Penrose Toolshed.

The BM 23 mystery tool was an angle trowel. No-one got it right, so we had a draw from the closest entries. The prize of the Arges 82 mm 1100 W planer worth \$199 went to David Willis of Ashburton.

BLOKES on the job

MARK WATSON,
at the BUILDNZ expo in Auckland.



Favourite tool
Power saw.

Favourite tip
Keep your fingers away from the power saw.

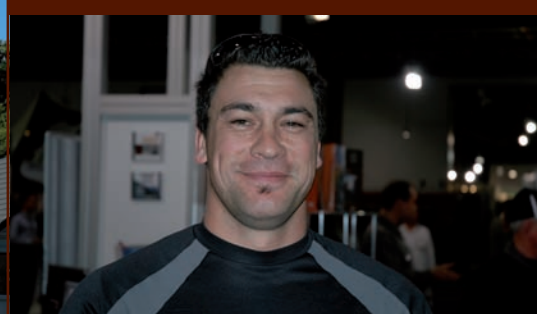
MARK ROBERTS,
at BUILDNZ.



Favourite tool
Prop saw.

Favourite tip
Check and double check.

TIEMI KENRICK,
at BUILDNZ.



Favourite tool
Eastwing hammer.

Favourite tip
Don't stand on a rotten rafter.

EXCITING NEW PUBLICATION!

Cover all your plastering needs

Good Practice Guide Texture-coated claddings provides wide-ranging information on texture-coated cladding design and installation. It covers the systems and performance requirements for texture-coated claddings, EIFS (Exterior Insulation and Finish Systems), and texture-coated fibre-cement. It also provides detail on the weatherproof coating application and textured-coating application to both EIFS and texture-coated fibre-cement.

Order your copy today for only **\$59.95** (plus \$4 p&p) by calling **0800 80 80 85 press 2**, or visit www.branz.co.nz for more information or to place your order.



Although BRANZ has made every attempt to ensure the accuracy of its information, it provides generic advice only and BRANZ accepts no liability for any loss or damage incurred. Opinions expressed in *Builder's Mate* do not necessarily reflect the views of BRANZ. Standards referred to can be purchased from Standards New Zealand. Tel: 04 498 5991 or www.standards.co.nz.

www.branz.co.nz
04 237 1170



©BRANZ Ltd, August 2007

Know someone on the job? Send us details of his or her favourite tip and tool and you could win \$50-worth of BRANZ books.